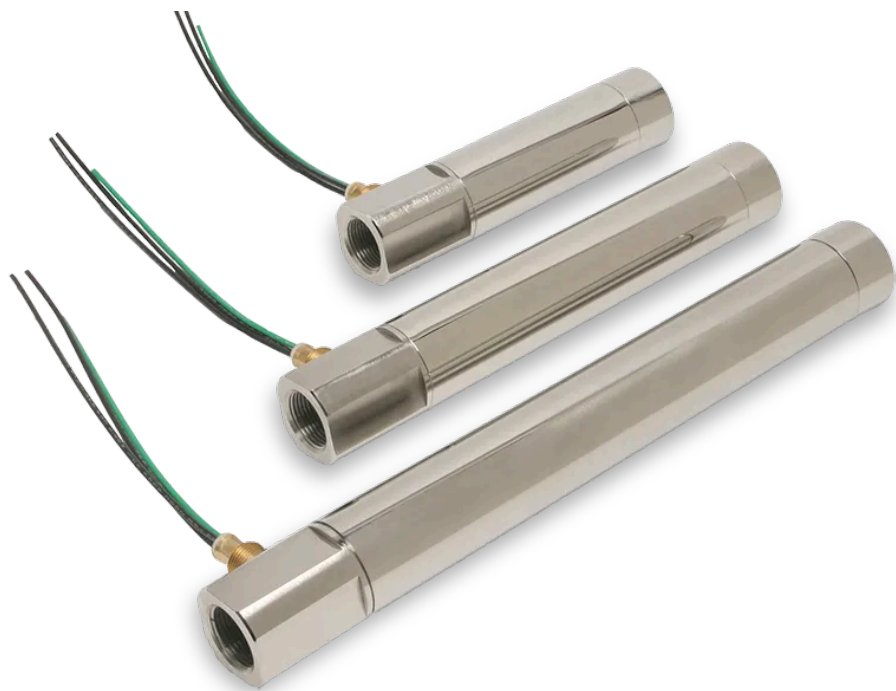


Heat Torch™ 200



The Heat Torch™ 200 is engineered to satisfy the most demanding requirements. It is contained in a 2" diameter stainless steel pipe and is available in three sizes. The 5" long heater body is for power ratings from 1000 to 4250 watts (with power increments of 250 watts). The 9" long is for power ratings of 4500 to 8500 watts (with standard power increments of 500 watts). The 13" long heater is for power ratings from 9000 to 12000 watts (with standard power increments of 1000 watts). The Heat Torch™ 200 has an allowable compressed air flow ranging from 9.6 to 100 SCFM. The maximum air input temperature is 250°F (121°C) with 1300°F (704°C) the maximum output temperature. Standard inlet fitting is a 1" NPT female. Standard outlets are 1 1/4" female NPT fitting or no exhaust fitting. UL Listed.

This Heat Torch™ 200 service applications include high capacity staking, curing, drying, heat-shrinking, sterilization, adhesive activation, air scrubbing, semiconductor processes, wafer drying, and air knives. Designed to heat any non-combustible gas.



MAX WATT	MAX INLET	MAX EXHAUST	MIN SCFM	MAX SCFM	PSIG*
12500 W	250° F	1300° F	9.6	100	120

* with minimal leakage.

Specifications

Mounting.....Horizontal / Vertical

Leads.....12 Gauge, 12" long

Heater Body.....Stainless Steel
Heater Fitting.....Stainless Steel

Wattage and Voltage Options

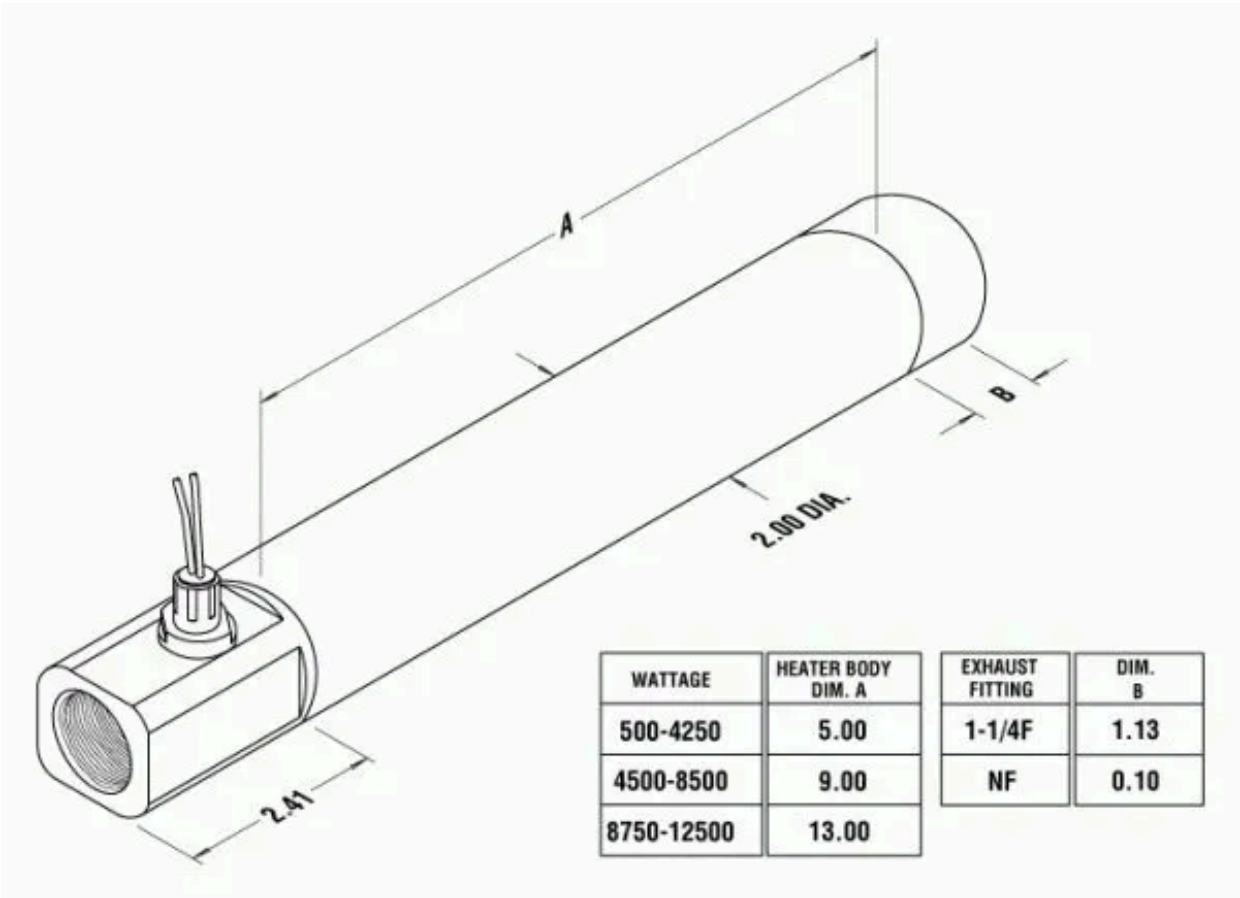
120V, single phase, 1.0kW-2.5kW
240V, single phase, 1.0kW-8.5kW
240V, three phase, 4.5kW-12.5kW
480V, single phase, 4.5kW-12.5kW
480V, three phase, 1.5kW-12.5kW

Applications

- High Capacity Staking
- Curing
- Adhesive Activation
- Drying
- Heat Shrinking
- Air Scrubbing
- Air Knives

Options

- Thermocouple Fitting
- Thermocouple
- Flexible Conduit



Resources



BROCHURES

Heat Torch™ 200



MANUALS

Quickstart Guide



3D DRAWINGS

Model 1 Ceramic Model.PDF

Model 2 Ceramic Model.PDF

Model 3 Ceramic Mode.PDF

Model 1 Ceramic Model.STP

Model 2 Ceramic Model.STP

Model 3 Ceramic Model.STP



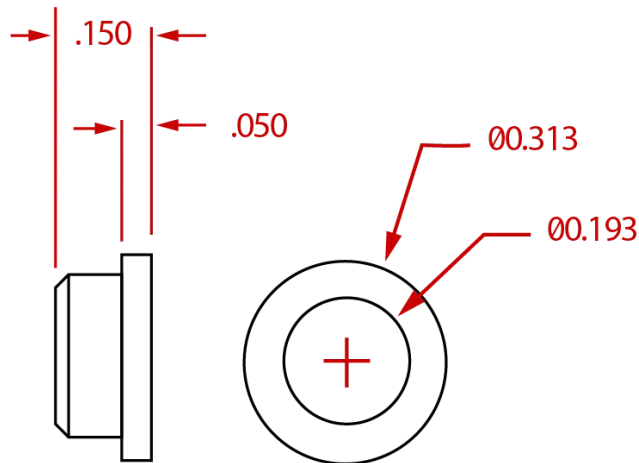
VIDEOS

Product Demo

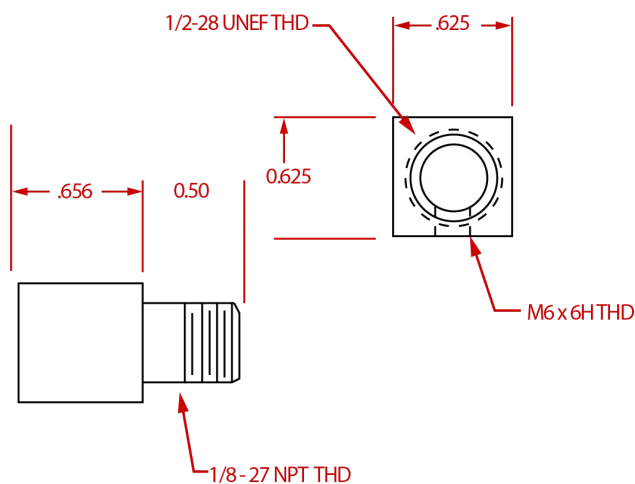
Process Heaters

Additional Information

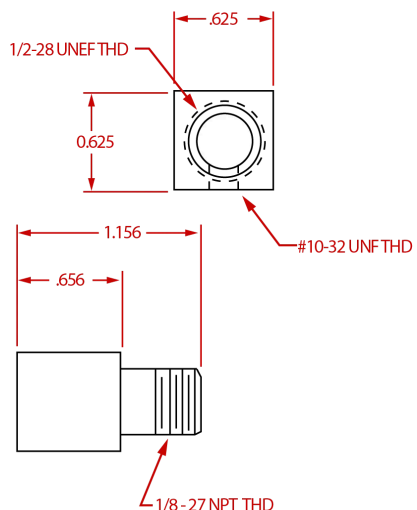
PRODUCT FITTINGS



Exhaust Fitting. No Fitting



Inlet Fitting. M6 Thread



Inlet Fitting. 10-32 UNF

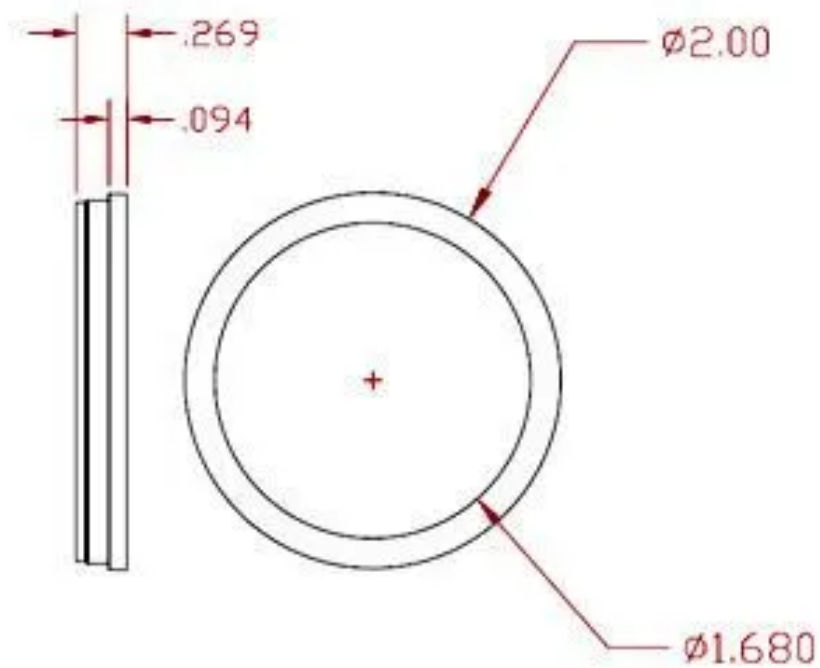
AIRFLOW PRESSURE DROP



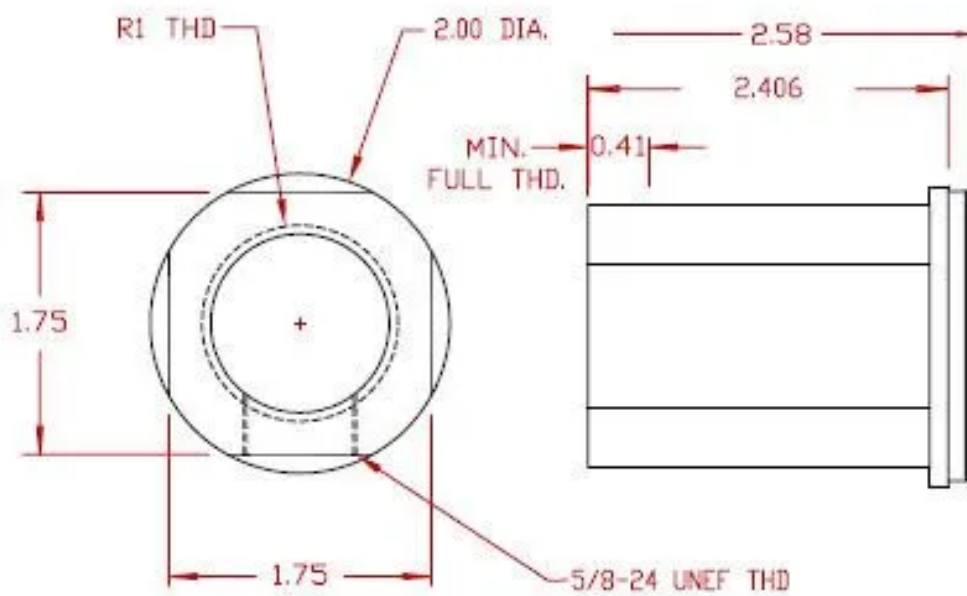
AIRFLOW (SCFM)	500W-4250W PRESSURE DROP (PSIG)	4500W-8500W PRESSURE DROP (PSIG)	8750W-12500W PRESSURE DROP (PSIG)
10	0.4	0.7	1.1
20	0.8	1.5	2.3
30	1.7	3.4	5.1
40	3.0	6.0	9.0
50	4.7	9.4	14
60	6.8	14	20
70	9.2	18	28
80	12	24	36
90	15	30	45
100	19	38	57

PRODUCT FITTINGS





Exhaust Fitting
No Fitting



Exhaust Fitting
R1=1/4-1 1/4-11 BSPT female

Thermocouple Fitting
2 t/c fittings with 2 t/c