

# Heat Torch™ 150 Inline Air Heater

High-Capacity, Focused Heating for Large Airflow Applications

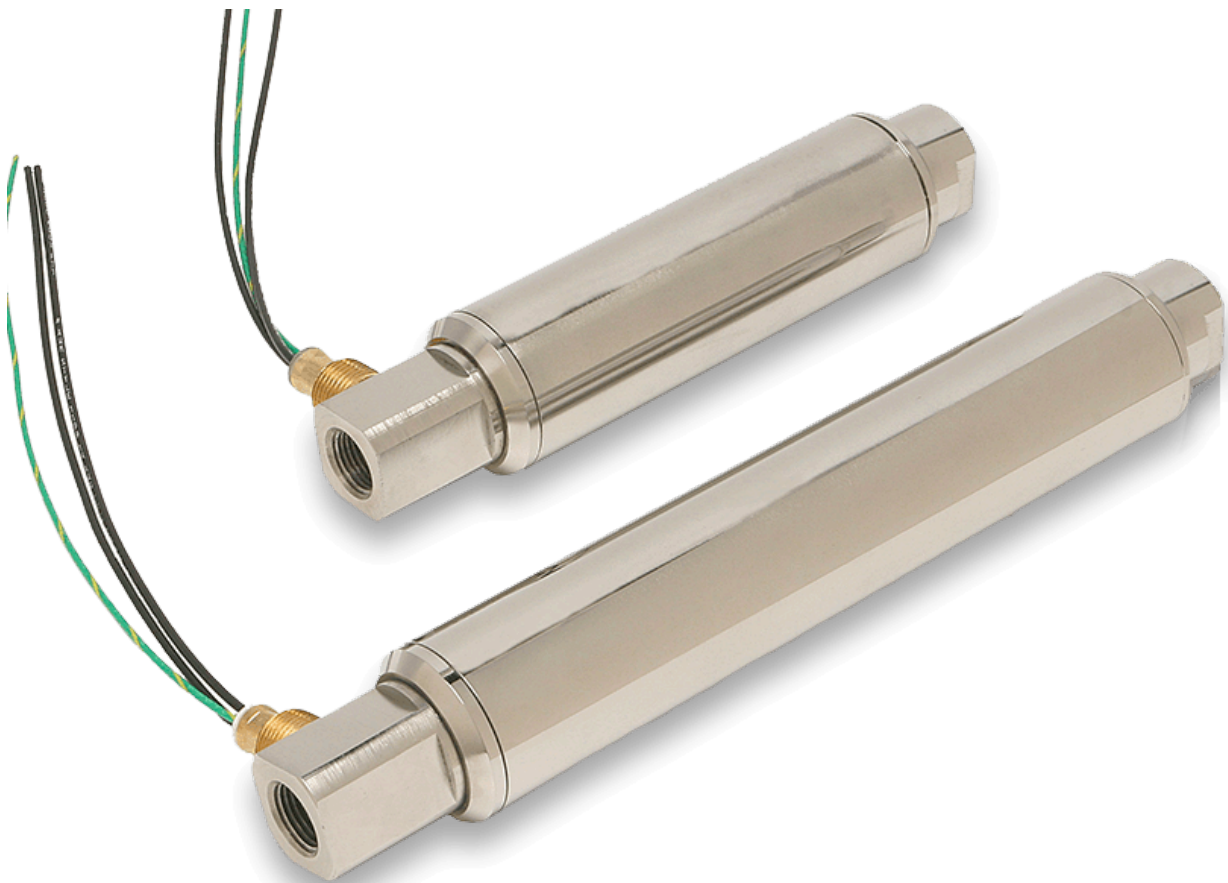


The **Heat Torch™ 150** from TUTCO Farnam is a **1.5" (38 mm) diameter inline air heater** designed for high airflow applications requiring consistent, focused heat. Engineered for durability, long life, and substantial airflow, the 150 is **ideal for industrial, laboratory, and OEM processes** demanding repeatable thermal performance and energy efficiency.

### The Heat Torch 150 comes in two heater body lengths:

- 4.7" length – accommodates 500–2,500 W in 250 W increments.
- 8.3" length – accommodates 2,750–5,000 W in 500 W increments.

Operating with compressed air or other non-combustible gases, the Heat Torch 150 handles **airflows from 4.8 to 70 SCFM**, with maximum exhaust **temperatures of 1,300°F (704°C)** and maximum **inlet temperatures of 250°F (121°C)**. Its stainless-steel body, UL-listed components, and flexible NPT inlet/outlet fittings allow easy integration into existing systems, ducting, or custom assemblies. Power options cover single-phase and three-phase supplies, enabling scalable solutions for large-volume airflow applications.



MAX WATT	MAX INLET	MAX EXHAUST	MIN SCFM	MAX SCFM	PSIG*
5000 W	250° F	1300° F	4.8	70	120

## Key Features & Benefits

### High-Capacity Airflow

Handles 4.8–70 SCFM, supporting high-volume processes while maintaining concentrated, controlled heat.

### Scalable Power Options

Accommodates 500 W–5,000 W across multiple voltage options, providing flexibility for a wide range of applications.

### Rapid Thermal Response

Efficient heating element design delivers quick heat-up and cool-down cycles for precise temperature control.

### UL-Listed Components

Ensures safe and reliable operation in industrial, laboratory, and OEM environments.

### Flexible Fitting Options

Standard 1/2" NPT inlet with multiple outlet options (1/4", 1/2", 1" NPT or no exhaust fitting) for easy integration.

### Optional Accessories

Thermocouple fittings, thermocouples, and flexible conduit provide enhanced temperature monitoring and process control.

## Wattage and Voltage Options

120V, single phase, 0.5kW-2.5kW

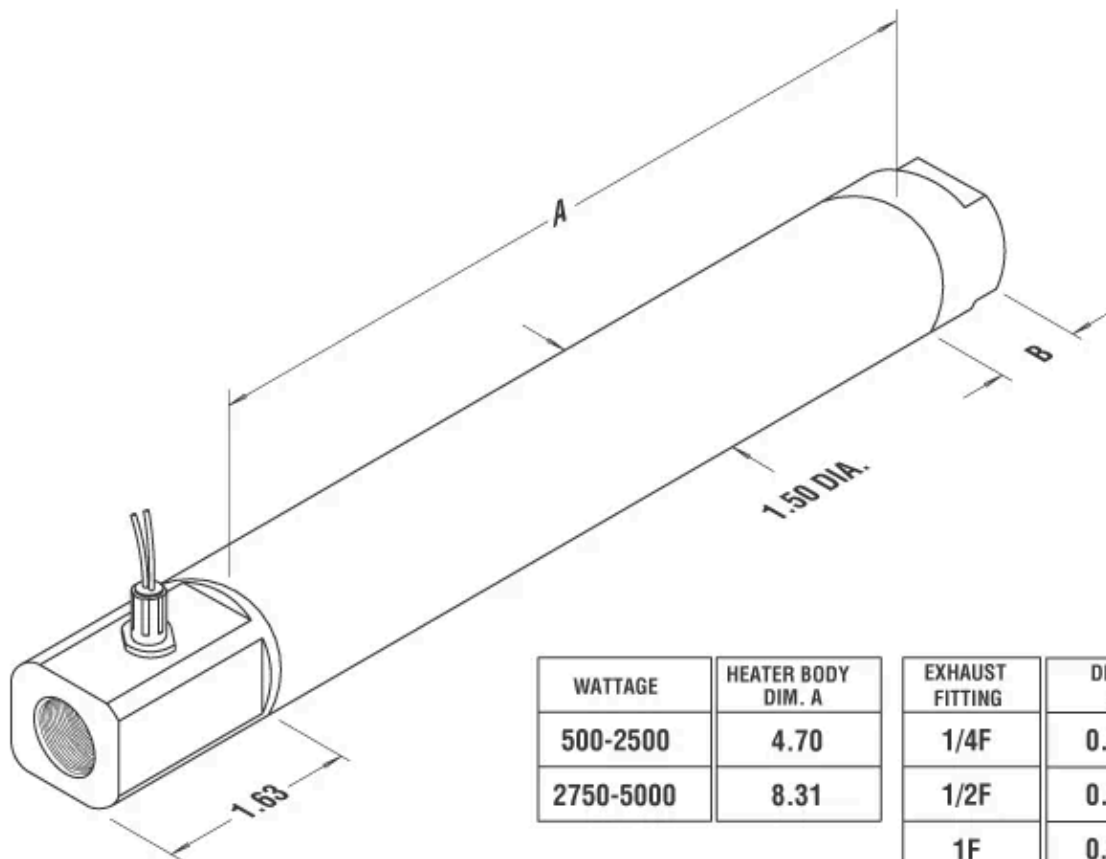
240V, single phase, 0.5kW-5.0kW

240V, three phase, 2.25kW-5.0kW

480V, three phase. 5.0kW

## Specifications

<b>Mounting</b> .....	Horizontal / Vertical
<b>Leads</b> .....	14 AWG, 12" Long
<b>Heater Body</b> .....	Stainless Steel
<b>Air Entryway Fitting</b> .....	Stainless Steel
<b>Inlet Fitting</b> .....	1/2" NPT Female
<b>Exhaust Fitting</b> .....	1/4", 1/2", 1" NPT Female or NF – No Fitting



WATTAGE	HEATER BODY DIM. A	EXHAUST FITTING	DIM. B
500-2500	4.70	1/4F	0.83
2750-5000	8.31	1/2F	0.87
		1F	0.88
		NF	0.06

# Ready to Build Your Solution?

Request a Quote or Contact our Applications Engineers to learn how a Heat Torch™ heater can improve your process consistency, energy efficiency, and thermal performance.

## Applications

The Heat Torch™ 150 is designed for large airflow, high-capacity applications that require precise, repeatable heat delivery. Its 1.5" diameter and wide airflow range make it ideal for industrial, laboratory, and OEM systems where thermal consistency, efficiency, and reliability are critical.

Typical applications include:

**Staking and Heat Forming** – Provide controlled heat for medium-to-large thermoplastic components in production or R&D settings.

**Curing Coatings and Adhesives** – Deliver uniform thermal energy to cure adhesives, coatings, and films across large surfaces.

**Adhesive Activation** – Activate heat-sensitive adhesives in assembly, packaging, or manufacturing operations.

**Drying Processes** – Efficiently dry materials, coatings, or products with controlled, high-volume airflow.

**Heat Shrinking** – Shrink tubing, films, or wraps over large components or assemblies with precision.

**Sterilization** – Generate high-temperature airflow for sterilizing laboratory or industrial equipment.

**Air Scrubbing** – Support industrial or laboratory air scrubbing applications where heated airflow aids contaminant removal or gas conditioning.

**Air Knives** – Provide heated airflow for drying, cleaning, or material handling in production lines.

**OEM and Production Line Integration** – Ideal for automated or modular systems requiring high-volume, focused heating.

**Laboratory Research and Process Development** – Enable consistent thermal input for R&D, prototyping, and process validation in large-scale airflow setups.

The Heat Torch 150's combination of high airflow capacity, scalable power, and focused heating ensures efficient, repeatable, and energy-conscious performance in a variety of demanding applications.

---

## Advantages Over Conventional Heaters

The Heat Torch™ 150 provides several key advantages that set it apart from traditional small air heaters and hot air tools:

**High-Volume Airflow** – Delivers 4.8–70 SCFM with focused, concentrated heat, supporting larger-scale processes than smaller Heat Torch models.

**Scalable Power** – Offers 500–5,000 W options with multiple voltage configurations to accommodate varying process demands.

**Concentrated, Efficient Heating** – Minimal heat loss ensures nearly all energy is delivered to the target area, improving process efficiency.

**Rapid Thermal Response** – Quick heat-up and cool-down cycles enable precise temperature adjustments and improved process control.

**Durable, Long-Life Construction** – Stainless-steel body and UL-listed components withstand heavy use and thermal cycling.

**Flexible Installation and Integration** – Horizontal or vertical mounting and multiple inlet/outlet fitting options allow easy system integration.

**Optional Monitoring and Control** – Thermocouples, fittings, and flexible conduit enable advanced process monitoring.

**Minimal Maintenance Requirements** – Rugged design reduces downtime, replacement costs, and overall maintenance needs.

**Backed by TUTCO Farnam Expertise** – Decades of engineering experience provide support for system integration, customization, and performance optimization.

## Why Choose TUTCO Farnam Heat Torch™ 150 Heaters?

The Heat Torch™ 150 is a high-capacity, industrial inline air heater designed to provide precise, repeatable heating at large airflow volumes. Its stainless-steel construction, scalable power options, and flexible fittings make it ideal for laboratory, industrial, and OEM applications where efficiency, reliability, and performance are critical.

## Resources



### **BROCHURES**

Heat Torch™ 150



### **MANUALS**

Quickstart Guide



### **DRAWINGS**

Dimensional Drawing.PDF



### **DRAWINGS**

1CER-1-2F-NF-TF2.STP

1CER-1-2F-1-2F-TF2.STP

2CER-1-2F-1-4F-TF1.STP



### **VIDEOS**

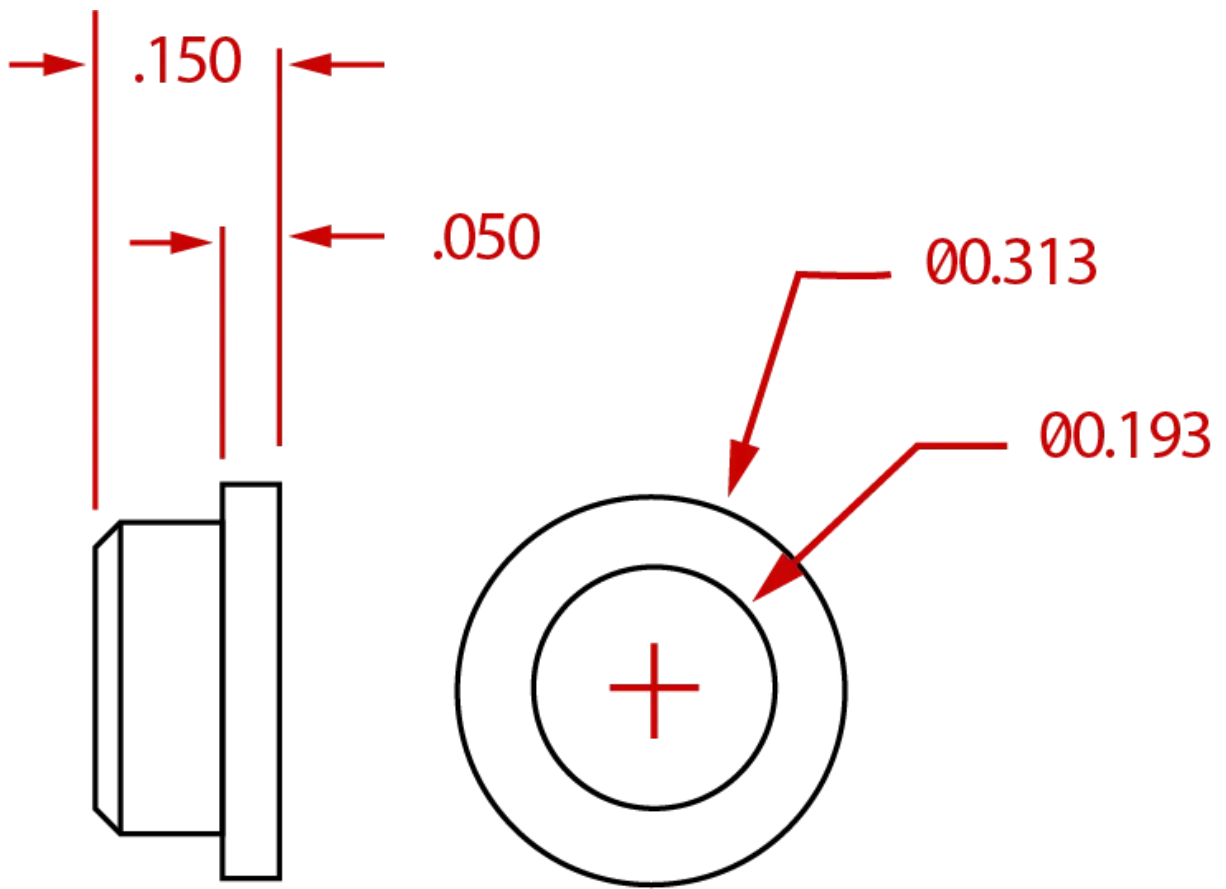
Product Demo

Process Heaters

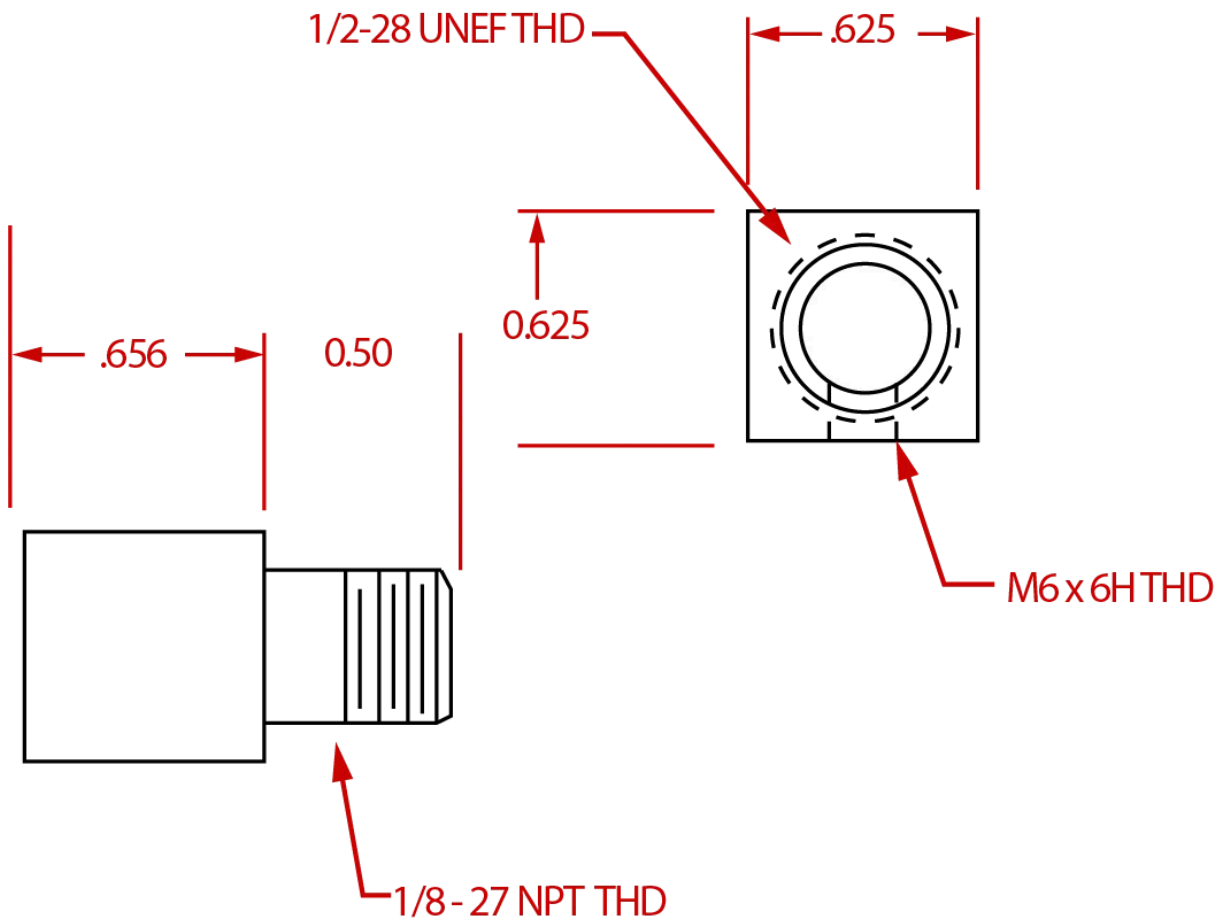
## Additional Information

### **PRODUCT FITTINGS**

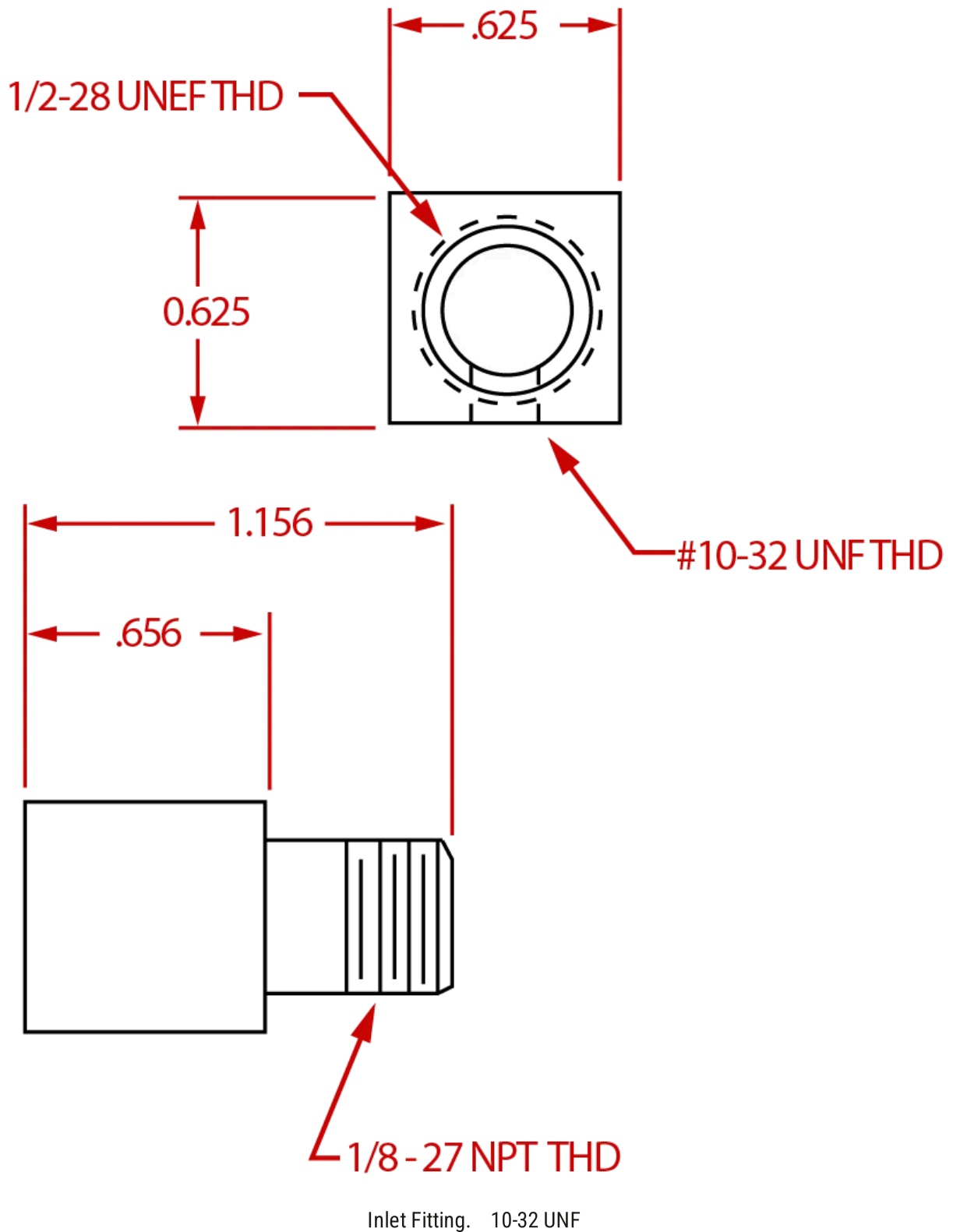




Exhaust Fitting. No Fitting



Inlet Fitting. M6 Thread



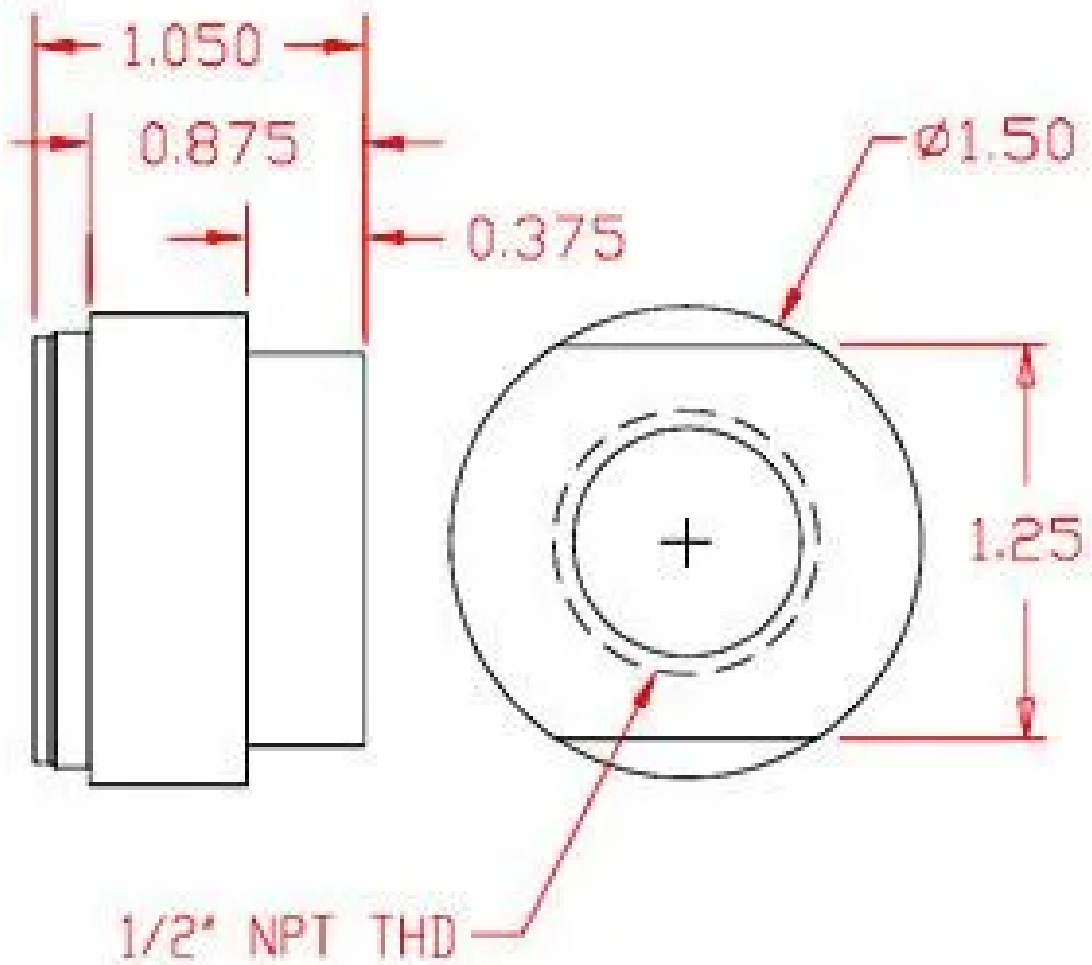
**AIRFLOW PRESSURE DROP**

**+**

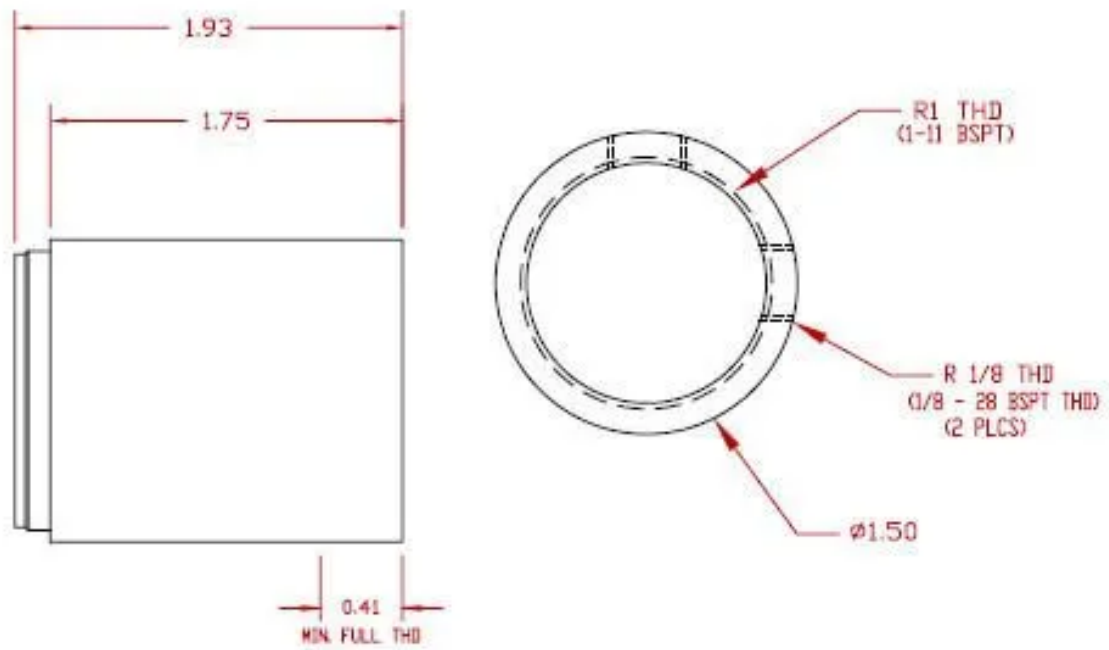
<b>AIRFLOW (SCFM)</b>	<b>500W-2500W PRESSURE DROP (PSIG)</b>	<b>2750W-5000W PRESSURE DROP (PSIG)</b>
5	0.3	0.6
10	0.6	1.2
20	1.1	2.2
30	2.5	5.0

AIRFLOW (SCFM)	500W-2500W PRESSURE DROP (PSIG)	2750W-5000W PRESSURE DROP (PSIG)
40	4.4	8.8
50	6.9	14
60	9.9	20
70	13	27

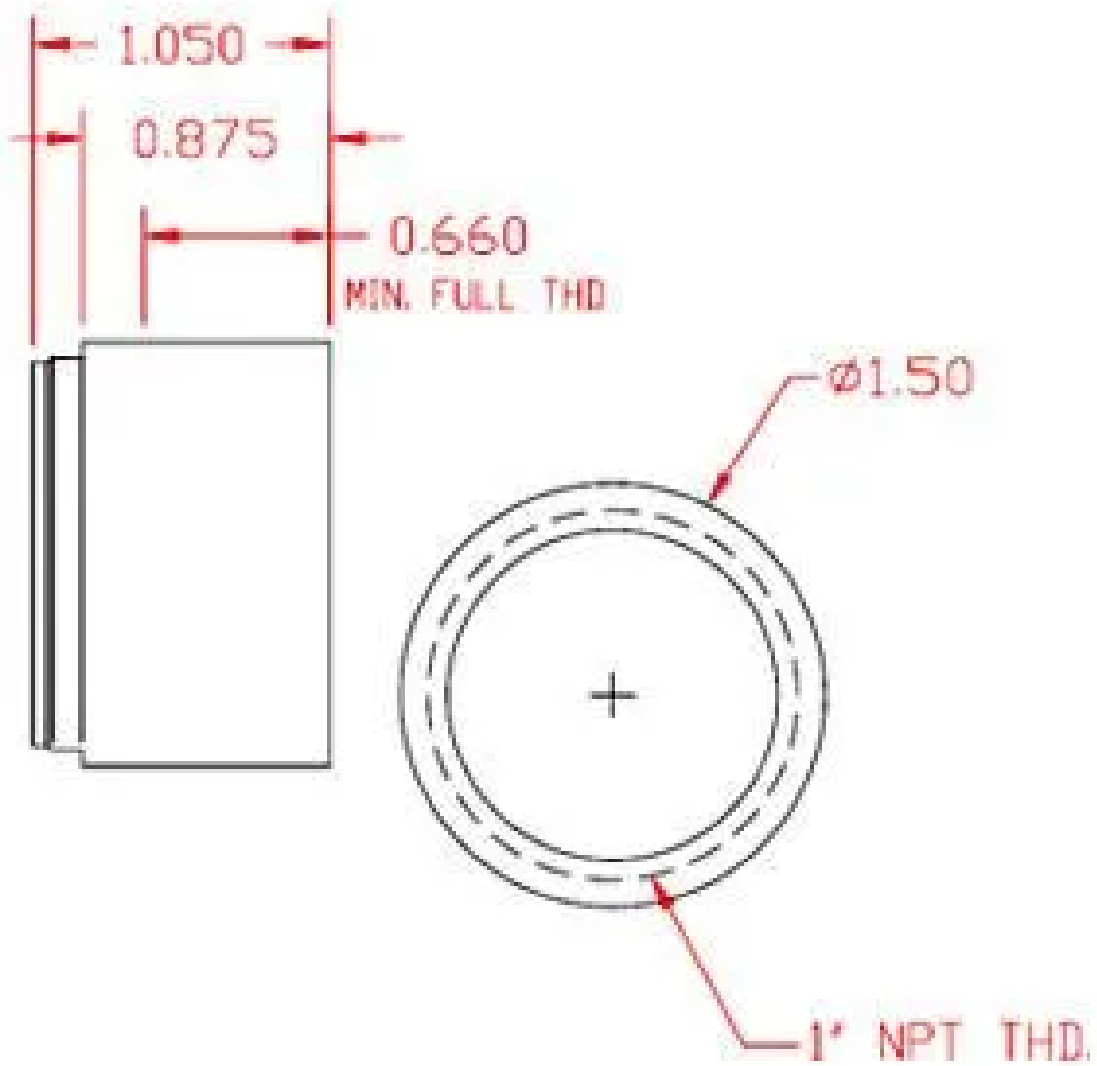
PRODUCT FITTINGS



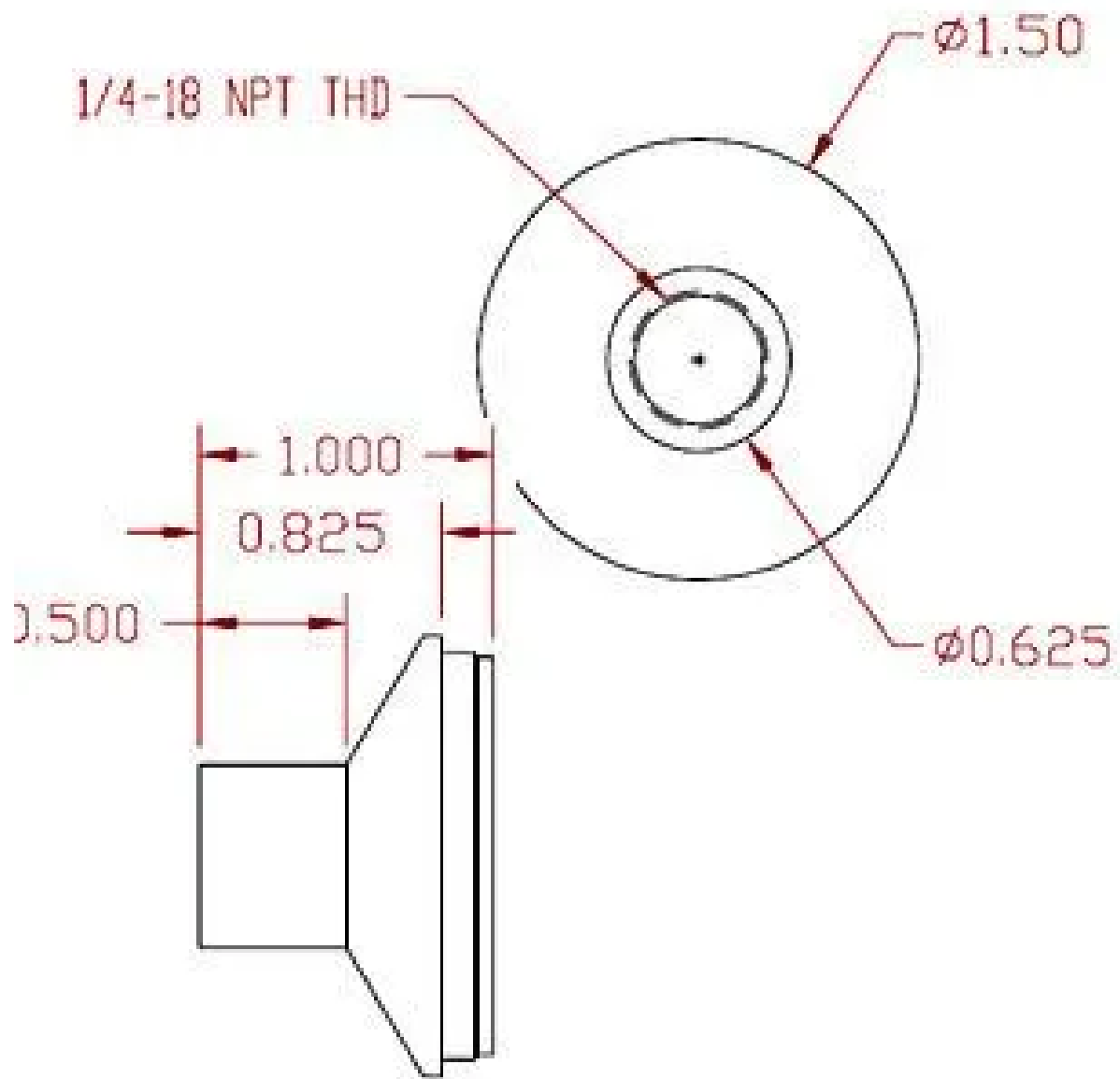
Exhaust Fitting  
1/2" NPT female



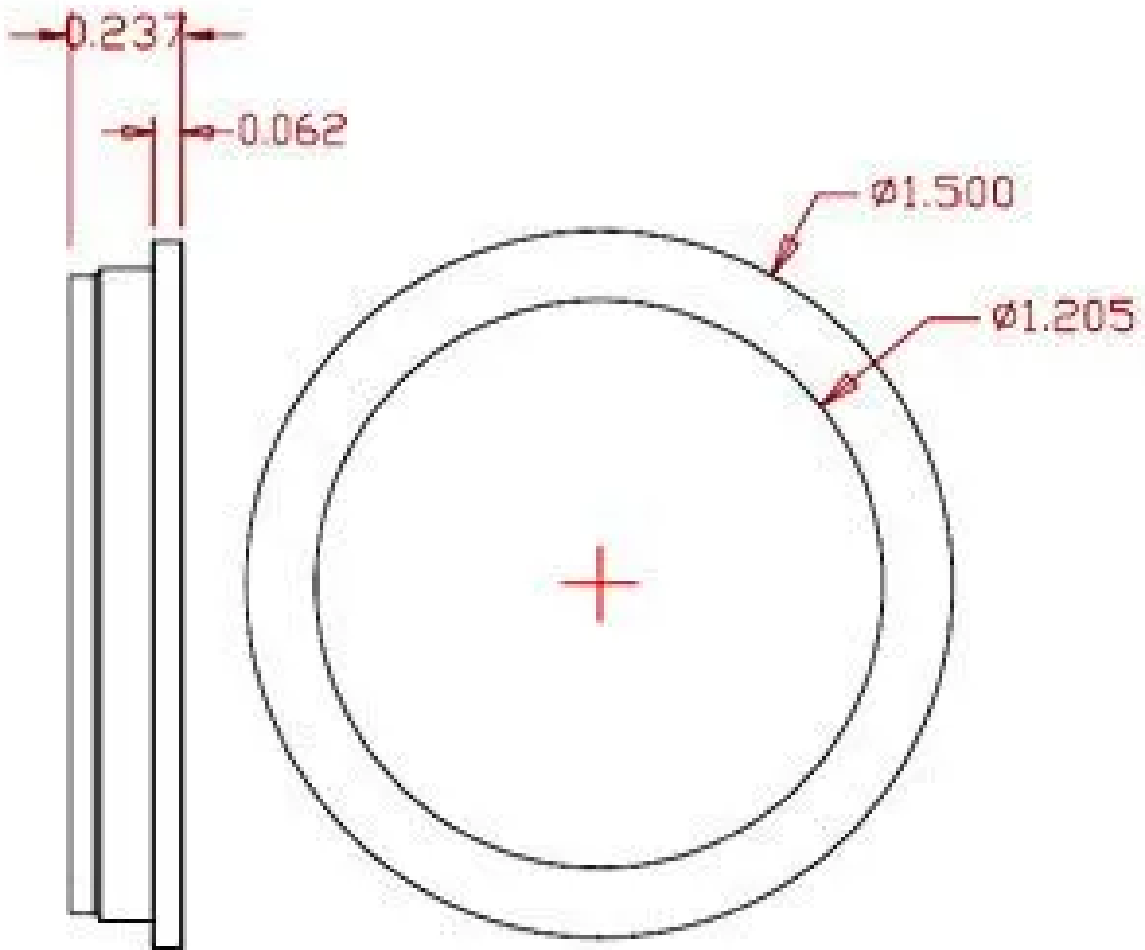
Exhaust Fitting  
R1-1-11 BSPT female thread



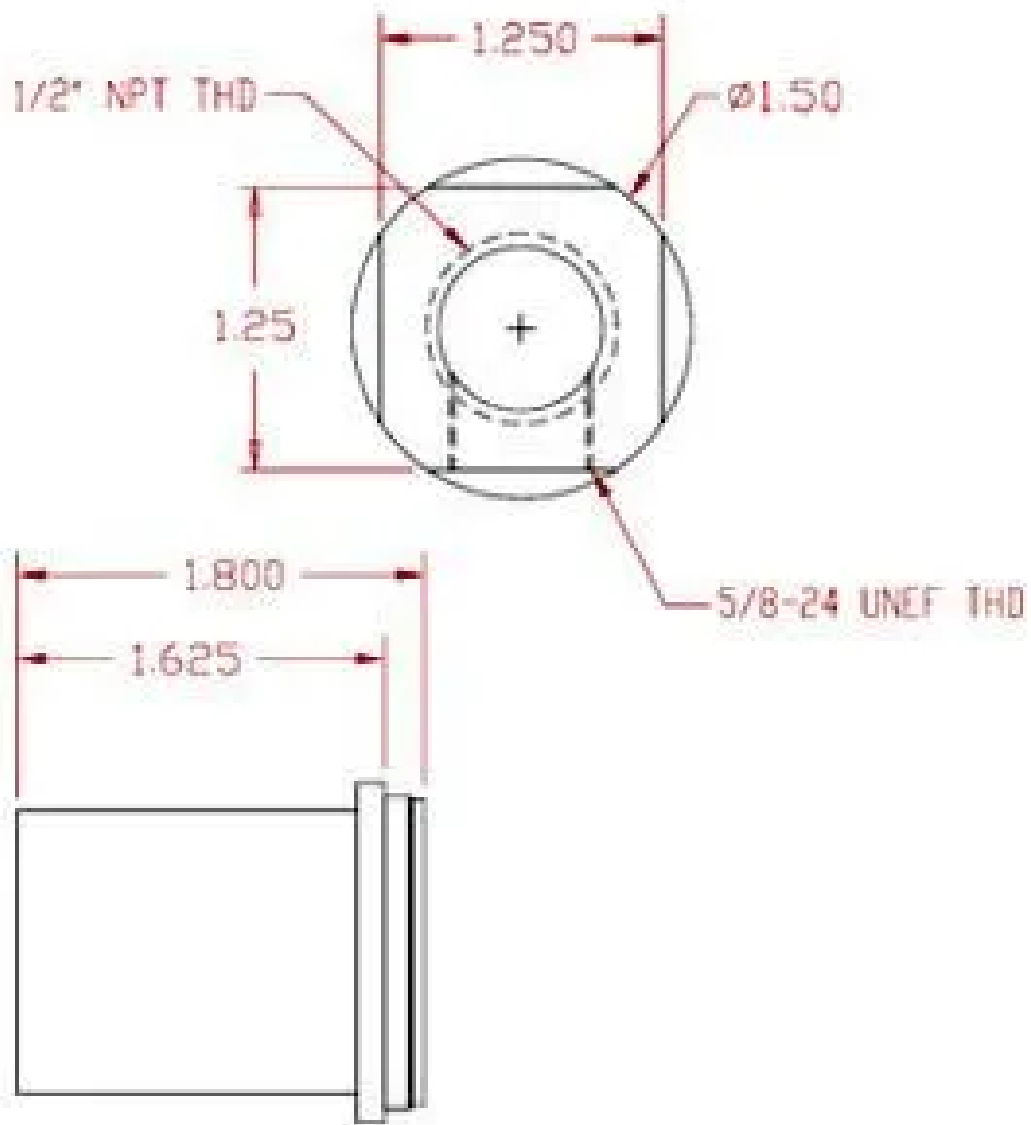
Exhaust Fitting  
1" NPT female



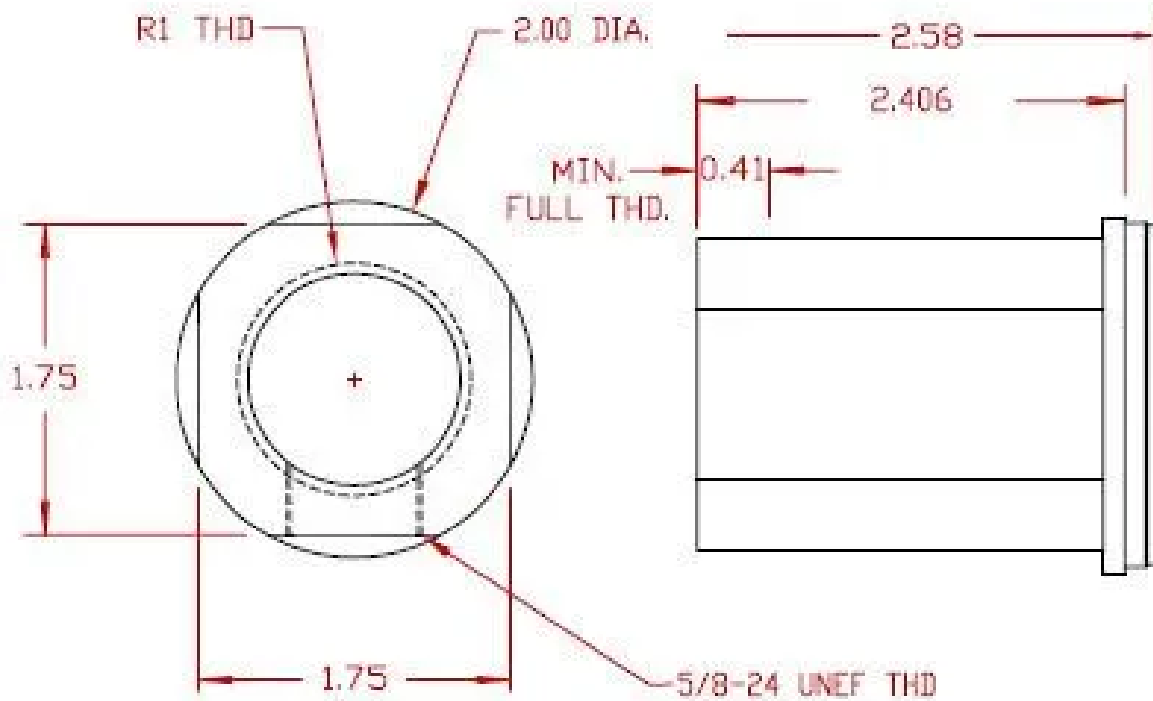
Exhaust Fitting  
1/4" NPT female



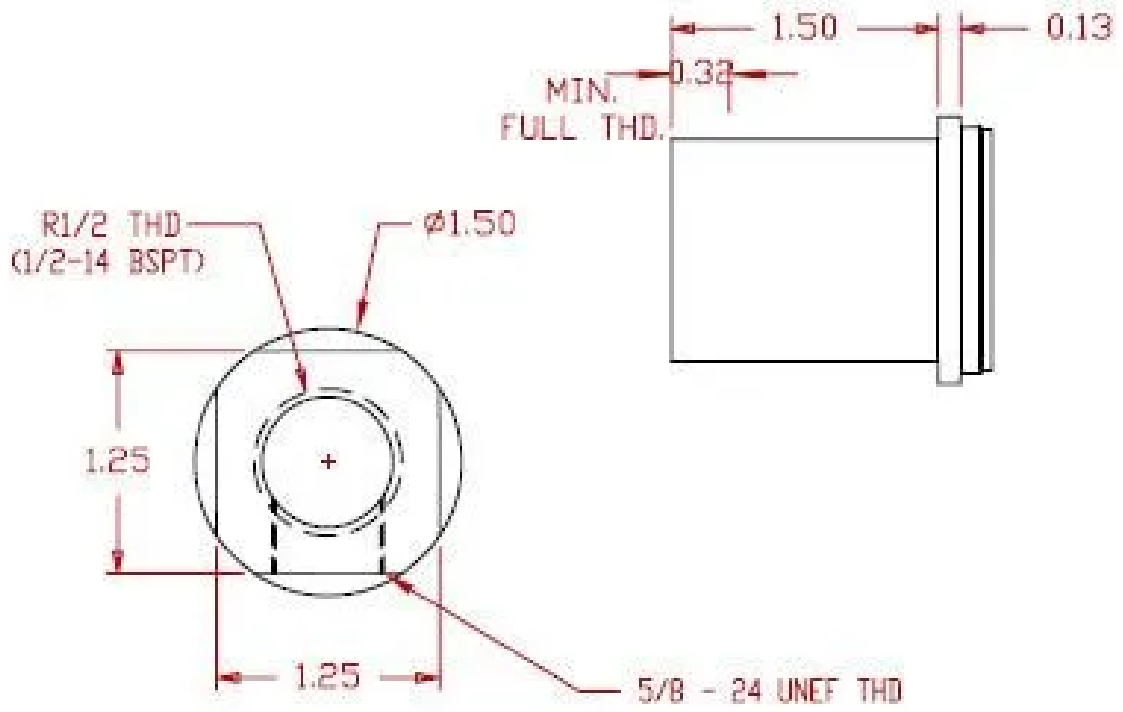
Exhaust Fitting  
No Fitting



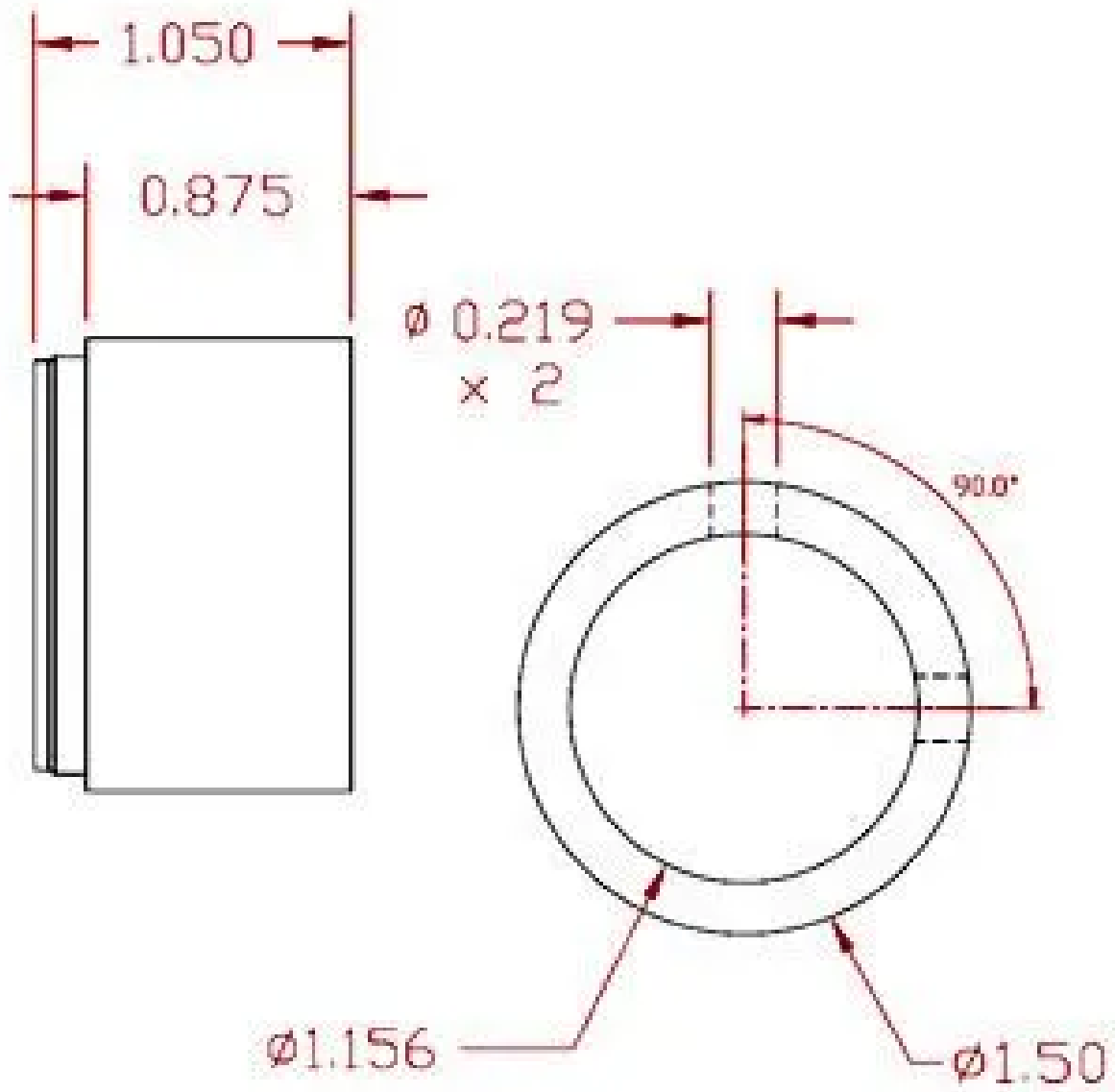
Inlet Fitting  
1/2" NPT female



Inlet Fitting  
R1=1-11 BSPT female



Inlet Fitting  
R1/2=1/2-14 BSPT female



Thermocouple Fitting  
2 t/c fittings with 2 t/c