

Heat Torch™ 075



Our Heat Torch™ 075 is a 0.75" diameter compact air heater providing moderate amounts of compressed air, and other non-combustible gases. Heat Torch™ 075 offers over twice the air flow capacity of the Heat Torch™ 050. The Heat Torch™ 075 can be mounted in either a horizontal or vertical position and includes several inlet and exhaust fitting options. Heat Torch™075 will meet requirements for air flow ranging from 1.3 to 25 SCFM with power of 100 watts to 1000 watts [in 100 watts increments]. UL Listed.

Maximum air input temperature is 250° F (121° C) with 1300° F (704° C) maximum output temperature with a ceramic core, and 932°F (500°C) maximum output with a mica core.



CORE	MAX WATT	MAX INLET	MAX EXHAUST	MIN SCFM	MAX SCFM	PSIG*
CERAMIC	1000 W	250° F	1300° F	1.3	25	120
MICA	1000 W	250° F	932° F	1.3	25	120

* with minimal leakage.

Specifications

- Mounting**.....Horizontal / Vertical
- Leads**.....20 Gauge, 12" long
- Heater Body**.....Stainless Steel
- Heater Fittings**.....Stainless Steel

Wattage and Voltage Options

Mica Core (Max. Exhaust of 900°F)

120V, single phase, 0.2kW-0.9kW
208V, single phase, 0.2kW-0.95kW
240V, single phase, 0.2kW-1.0kW

Ceramic Core (Max. Exhaust of 1300°F)

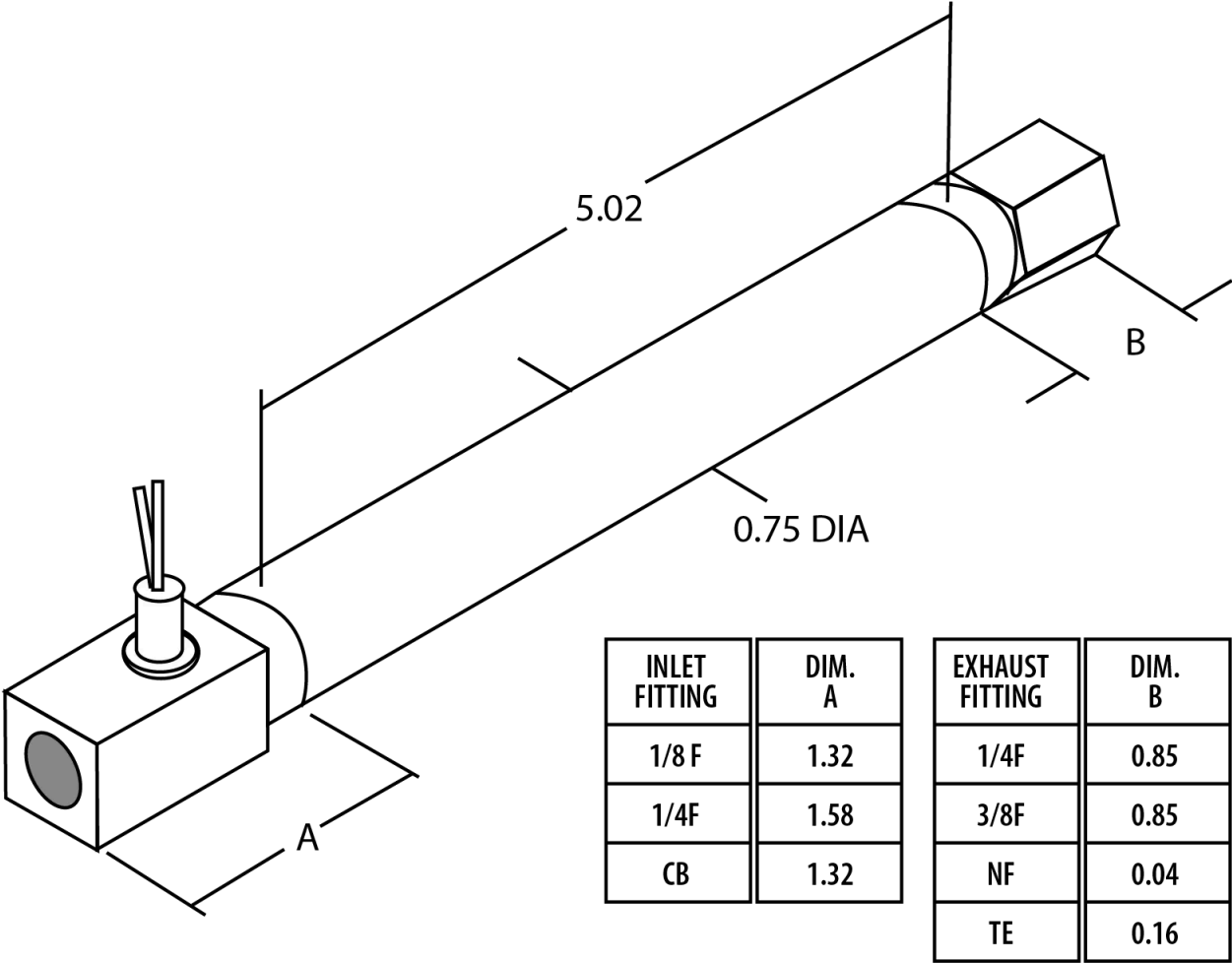
120V, single phase, 0.2kW-0.9kW
208V, single phase, 0.2kW-1.0kW
240V, single phase, 0.2kW-1.0kW

Applications

- Staking
- Curing
- Adhesive Activation
- Drying
- Heat Shrinking
- Sterilization

Options

- Thermocouple Fitting
- Thermocouple
- Flexible Conduit



Resources



BROCHURES

Heat Torch™ 075



MANUALS

Quickstart Guide



DRAWINGS

Dimensional Drawing.PDF



3D DRAWINGS

1/4" F NPT inlet, 1/4" F NPT outlet, 1 TC.STP

1/4" F NPT, inlet, 3/8" F NPT outlet, 2 TC.STP

1/8" F NPT inlet, 1/4" F NPT outlet, 1 TC.STP

1/8" F NPT inlet, No outlet fitting No TC.STP



VIDEOS

Product Demo

Process Heaters

Additional Information

AIRFLOW PRESSURE DROP



AIRFLOW (SCFM)	PRESSURE DROP (PSIG)
1.3	0.1
2	0.2
3	0.5
4	0.8
6	1.8
8	3.2
10	5.0
15	11.3
20	20.0
25	31.3

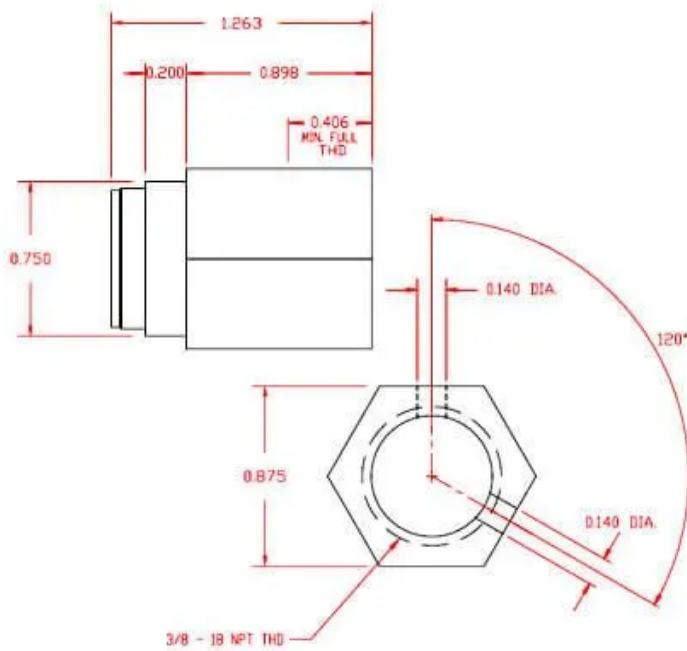
WATTAGE/MINIMUM FLOW CHART



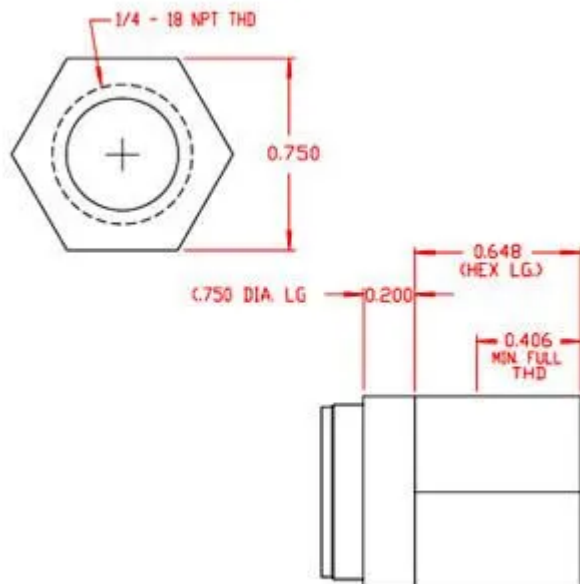
WATTAGE	MINIMUM FLOW REQUIRED AT MAX POWER INLET AIR TEMPERATURE 72° F (SCFM)
100	1.3
200	1.3
300	1.3
400	1.3

WATTAGE	MINIMUM FLOW REQUIRED AT MAX POWER INLET AIR TEMPERATURE 72° F (SCFM)
500	1.3
600	1.3
700	1.3
800	1.4
900	1.7
1000	1.8

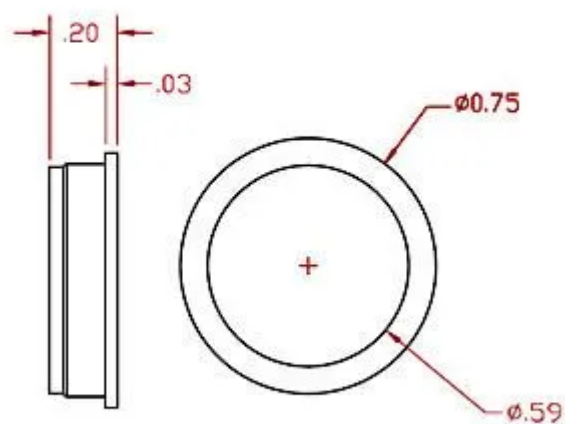
PRODUCT FITTINGS



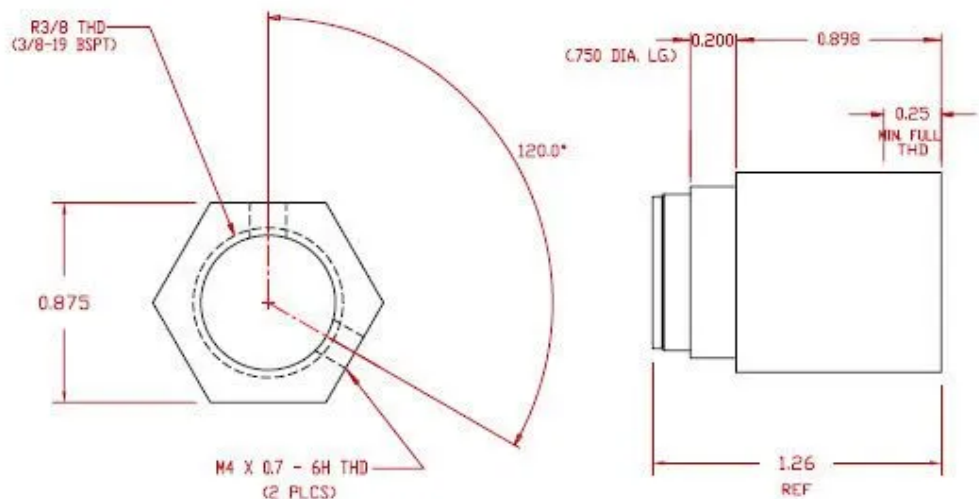
Exhaust Fitting
3/8" NPT Female



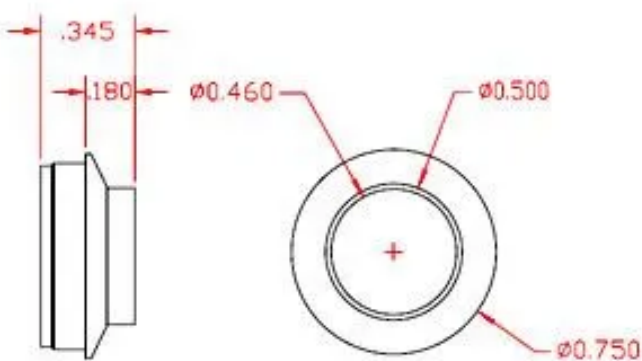
Exhaust Fitting
1/4" NPT Female



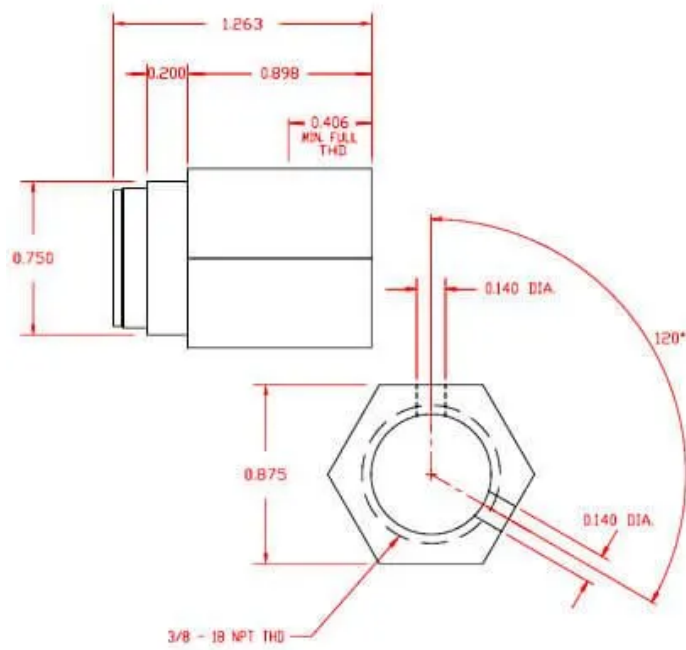
Exhaust Fitting
No Fitting



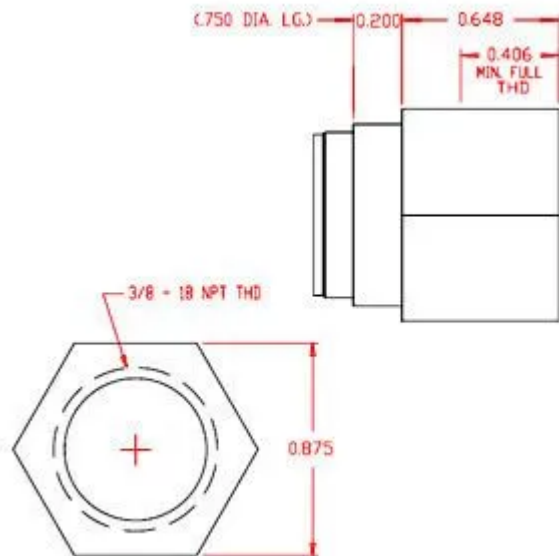
Exhaust Fitting
R3/8=3/8-19 BSPT Female



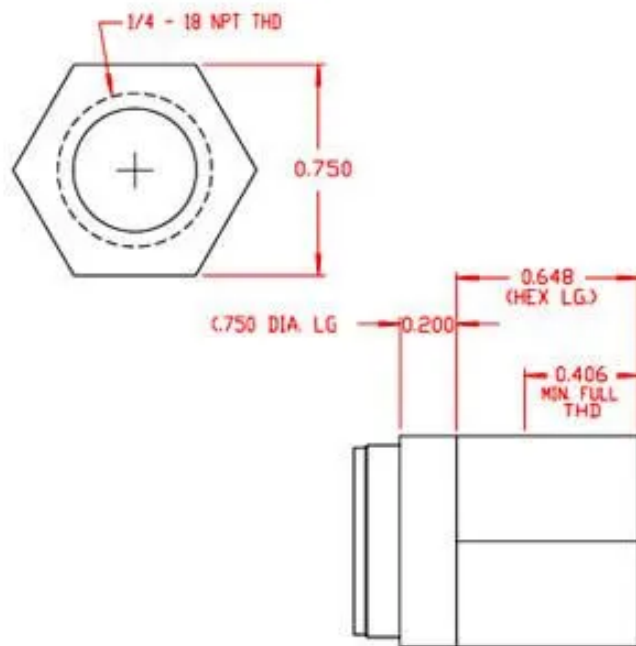
Exhaust Fitting
3/4" to 1/2" Reducing Adaptor



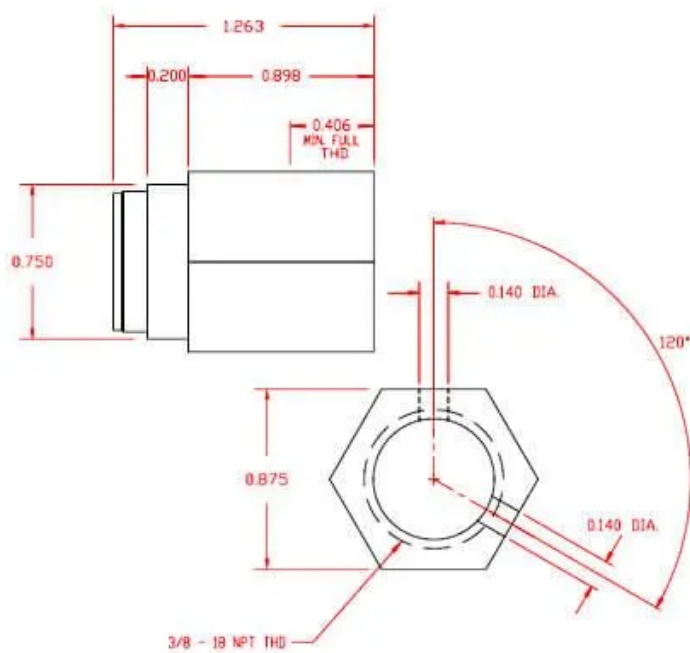
Exhaust Fitting
3/8" NPT Female



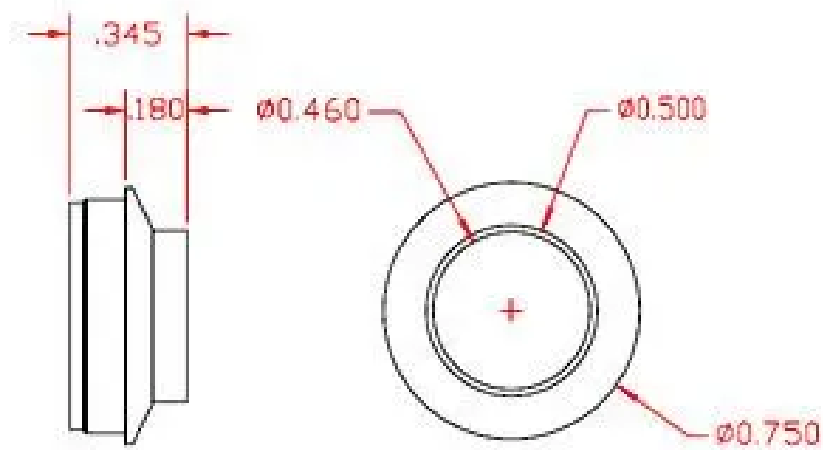
Exhaust Fitting
3/8" NPT Female



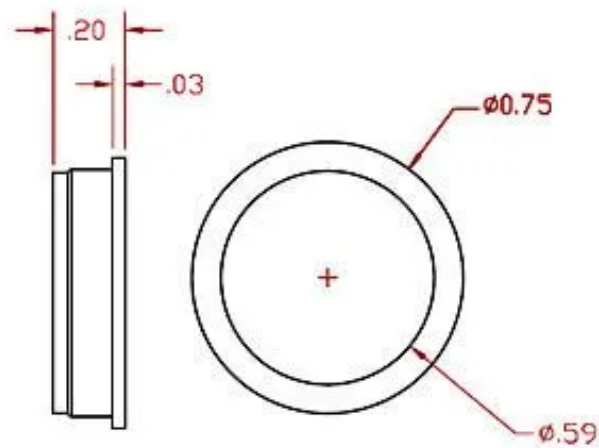
Exhaust Fitting
1/4" NPT Female



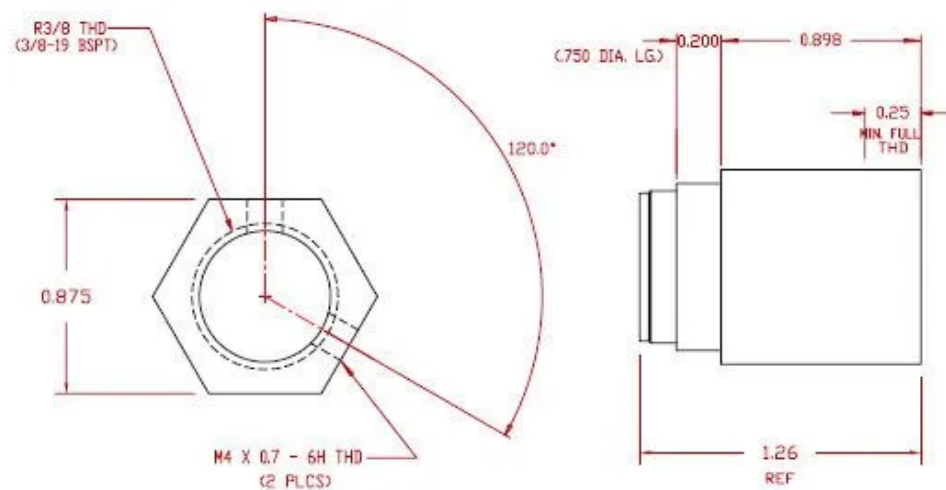
Exhaust Fitting
3/8" NPT Female



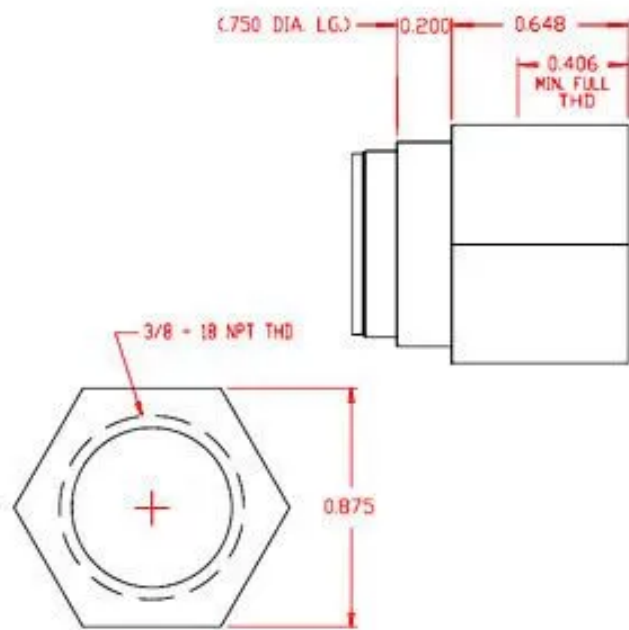
Exhaust Fitting
3/4" to 1/2" Reducing Adaptor



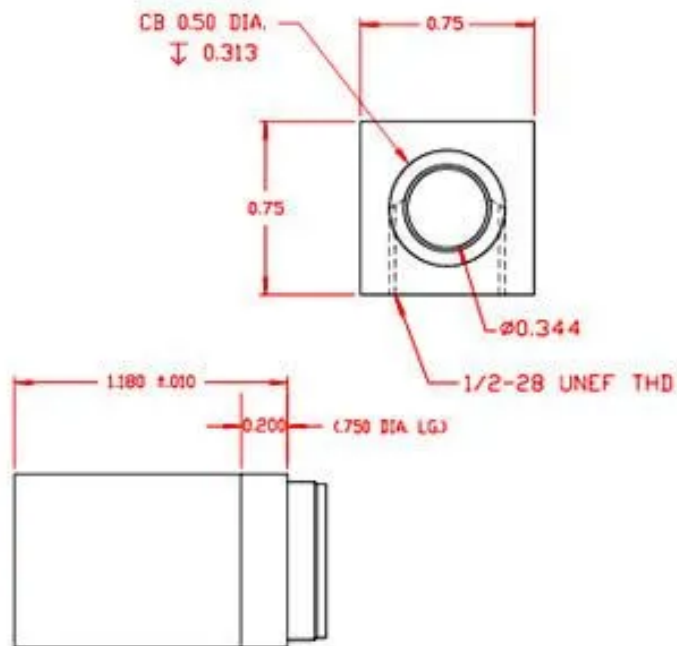
Exhaust Fitting
3/8" NPT Female



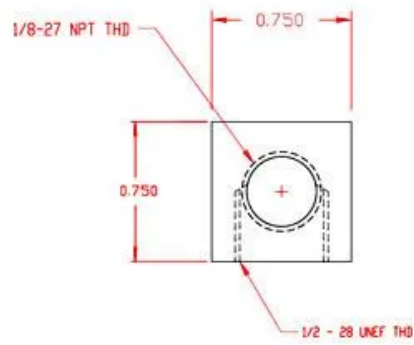
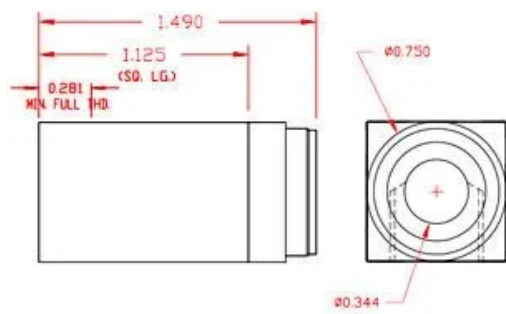
Exhaust Fitting
R3/8=3/8-19 BSPT Female



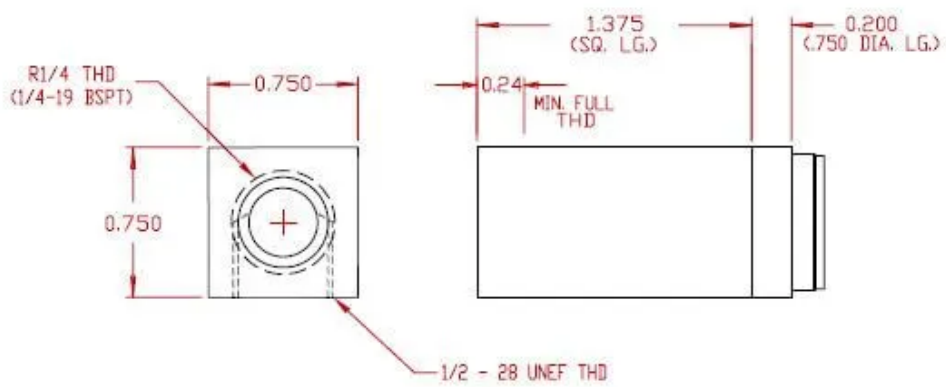
Exhaust Fitting
3/8" NPT Female



Inlet Fitting
Counterbore 1/2" Female



Inlet Fitting
1/8" NPT Female



Inlet Fitting
R1/4=1/4-19 BSPT Female