

Flow Torch™ 600



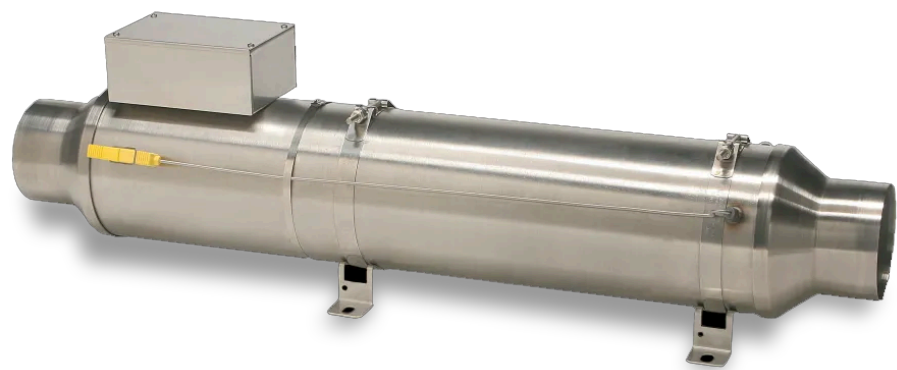
The Flow Torch™ 600 is an open coil air heater designed for high flow rates at low pressure drop due to its efficient design with minimal flow restrictions. The robust construction of this 6" diameter stainless steel heater offers reliable long-life performance and reduced operational cost. The Flow Torch™ 600 incorporates a spiral wound element of the highest grade material, providing quick heat up and cool down cycles with maximum heat transfer.

The Flow Torch™ 600 is capable of operating with airflow of 1100 SCFM and a maximum operating pressure of 3 PSIG*. Maximum output temperature is 482 °C (900 °F). All Flow Torch Heaters are UL recognized components under UL file number E365755. Regenerative Blowers available with complete systems.

** Note: minor leakage through stranded leads*

Flanged Fittings!

We have flanges available as a standard option on our Flow Torch heaters. [Click here](#) to build your FT400, FT600 & FT800 with flanged inlet and exhaust fittings.



| MAX WATT | MAX INLET | MAX EXHAUST | MIN SCFM | MAX SCFM | PSIG* |
|----------|-----------|-------------|----------|----------|-------|
| 60000 W | 392° F | 932° F | 38 | 1100 | 3 |

* with minimal leakage.

| WATTAGE | 10 kW | 15 kW | 20 kW | 25 kW | 30 kW | 35 kW | 40 kW | 45 kW | 50 kW | |
|--------------------|-------|-------|-------|-------|-------|-------|-------|-------|-------|---|
| MIN. SCFM REQUIRED | 38.2 | 57.2 | 76.3 | 95.4 | 114.5 | 133.6 | 152.6 | 171.7 | 190.8 | 2 |

Standard power of 7 kW to 60 kW is available for a wide range of applications

Specifications

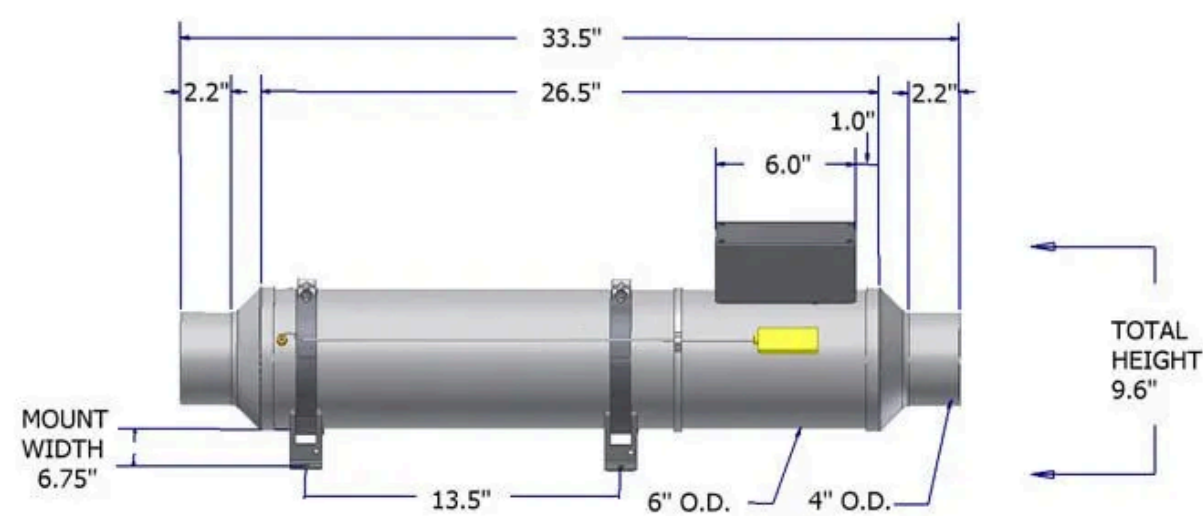
- Mounting.....Horizontal / Vertical
- Heater Body.....Stainless Steel
- Inlet Fitting.....Stainless Steel
- Exhaust Fitting.....Stainless Steel

Control Panels are also available to provide precise temperature regulation.

| A | INLET FITTING | B | EXHAUST FITTING | C |
|-------|---------------|-------|-----------------|-------|
| 26.5" | NF | 0 | NF | 0 |
| 26.5" | 4T, 5T | 3.5" | 4T, 5T | 3.5" |
| 26.5" | 3T | 3.75" | 3T | 3.75" |

Applications

- Hot Air Curtains
- Air Drying
- Baking
- Chemical Processing
- Dehumidification
- Laminating
- Textile Applications
- Web Drying Ink Drying
- Paint Baking/Drying
- Plastic Curing
- Metallization Exhaust
- Gas Heating Hopper
- Drying Sterilization



Resources



BROCHURES

Flow Torch™
Insulation Blanket



MANUALS

Quickstart Guide



DRAWINGS

FT600 Dimensions PDF
FT600 Dimensions DWG
FT600 Dimension Drawing.PDF
FT600 Wiring Diagram.PDF



3D STEP DRAWINGS

FT600w/4"Reducers.STP
FT600w/4"Reducers.PDF
FT600-3T-3T-2F2.STP
FT600-3T-3T-2F2 (2017)
FT600-4T-4T-2F2.SLBTP
FT600-4T-4T-2F2.SLBPT
FT600-4T-4T-2F2 .STP
FT600-4T-4T-2F2 (2017).STP
FT600-FL1-FL1-TF2.STP
FT600-FL1-FI1-TF2.SLBPT
FT600-NF-NF-TF2.STP
FT600-NF-NF-TF2.SLBPT

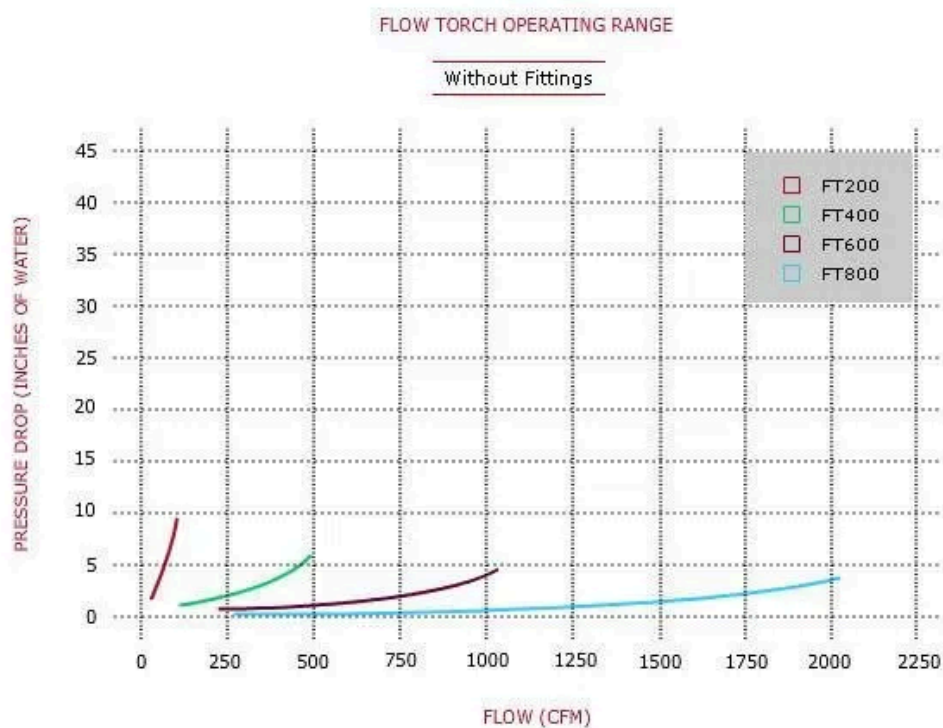


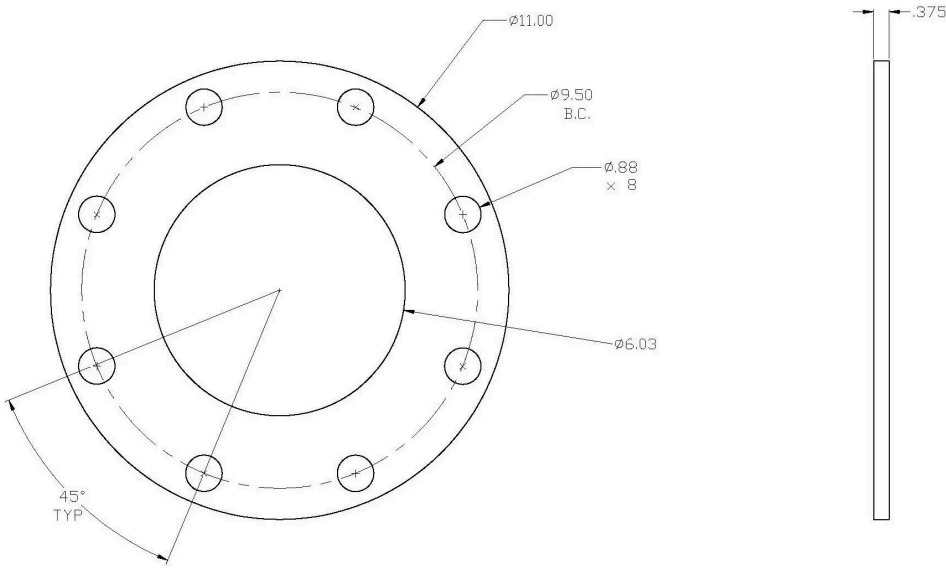
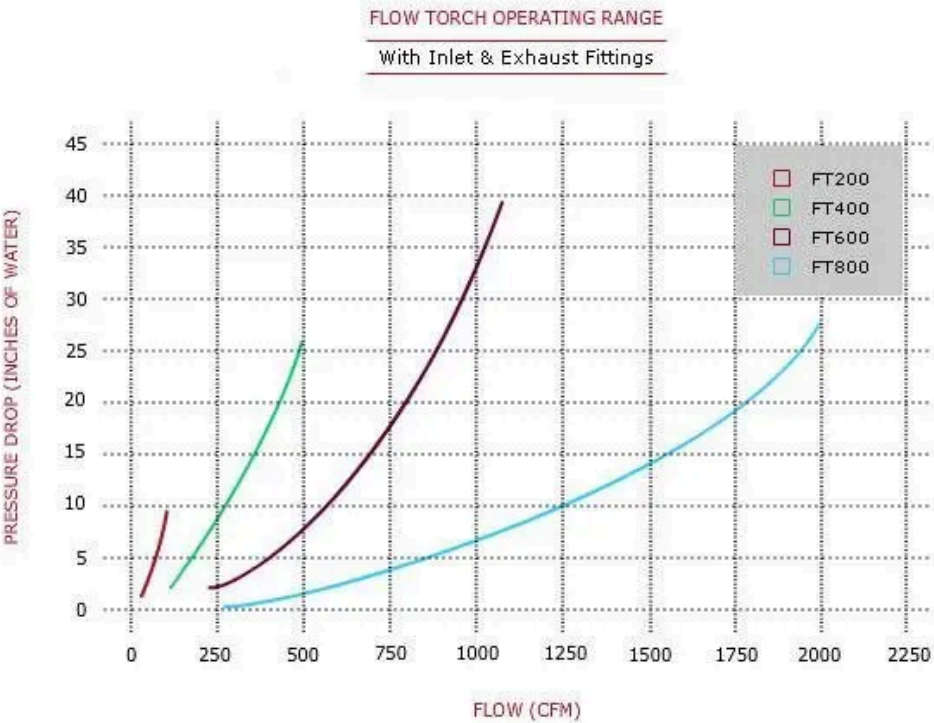
VIDEOS

Product Demonstration
Process Heaters

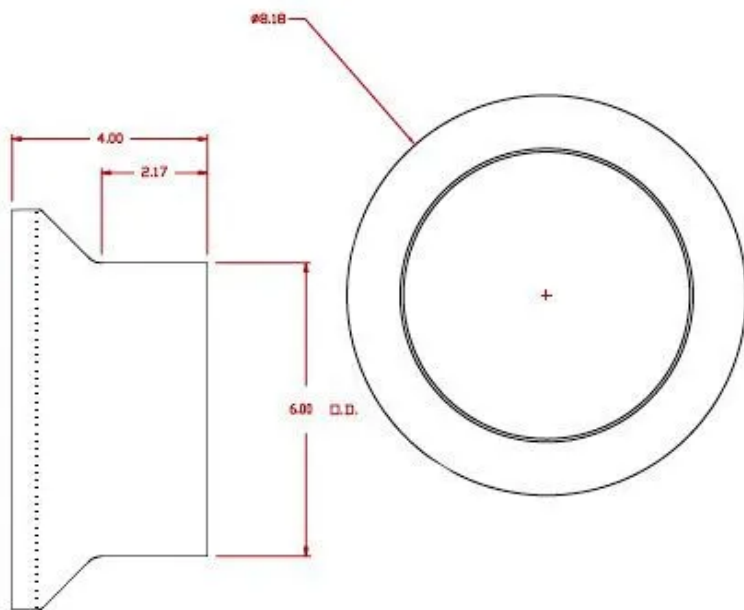
Additional Information

PRESSURE DROP CHART (WITHOUT FITTING)

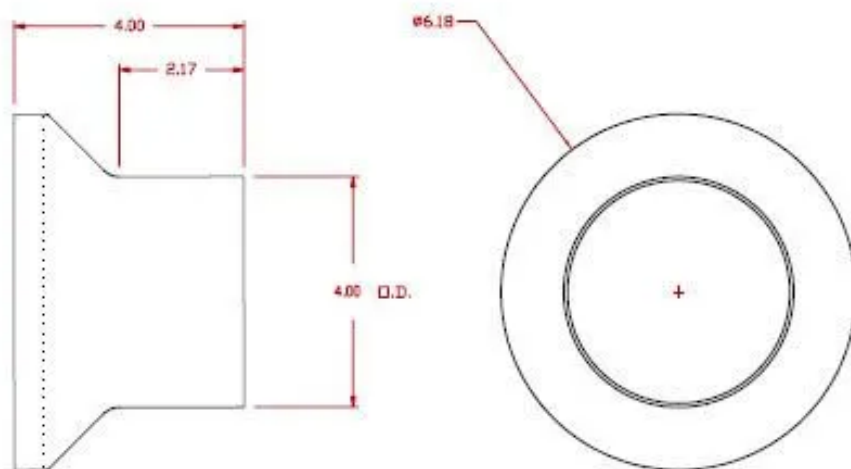




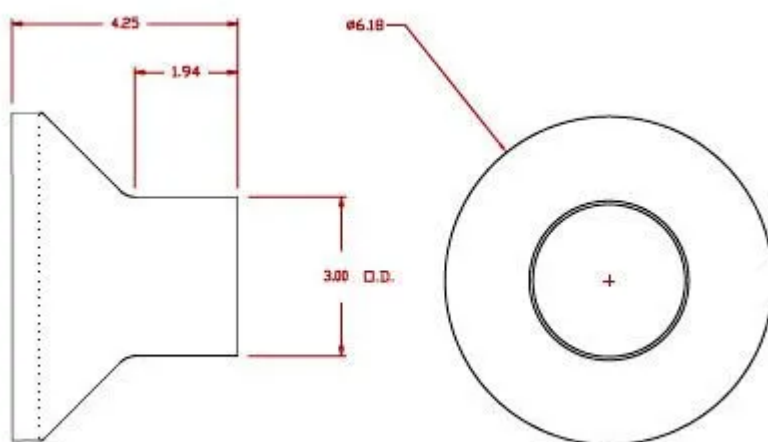
Exhaust Fitting
11" Flanged Fitting



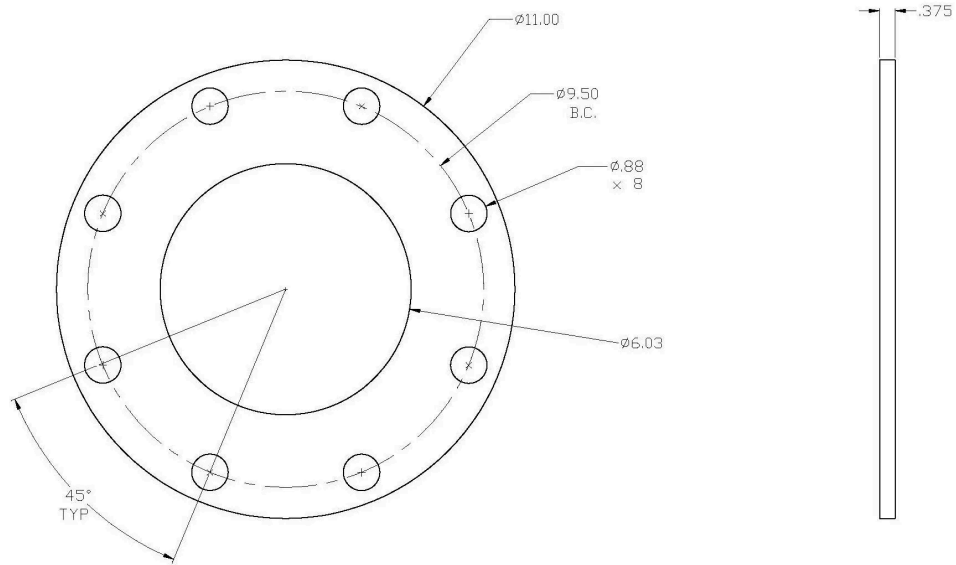
Exhaust Fitting
6" Diameter Tube



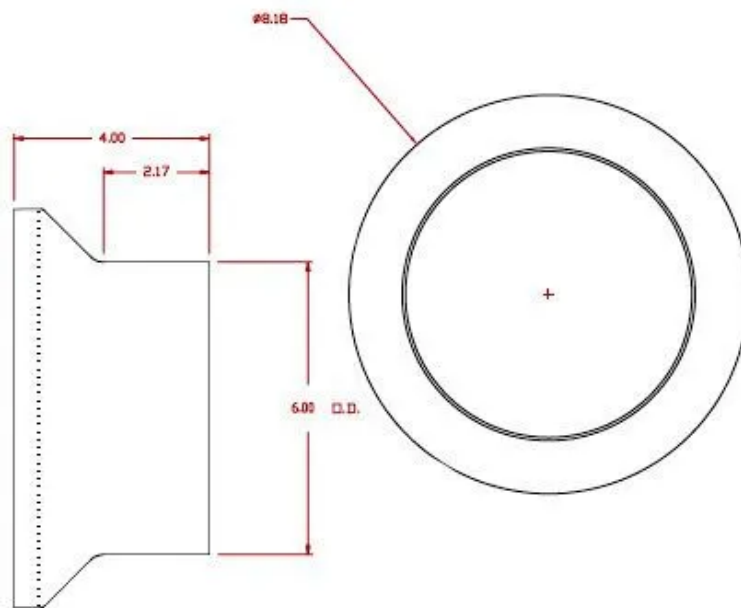
Exhaust Fitting
4" Diameter Tube



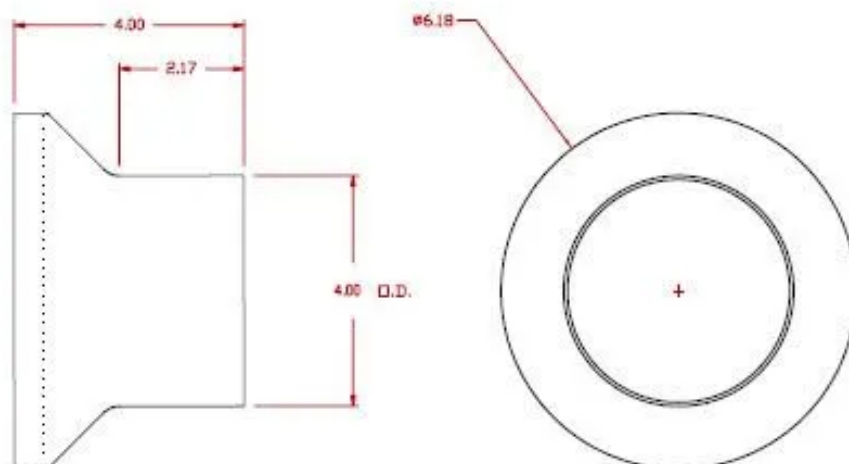
Exhaust Fitting
3" Diameter Tube



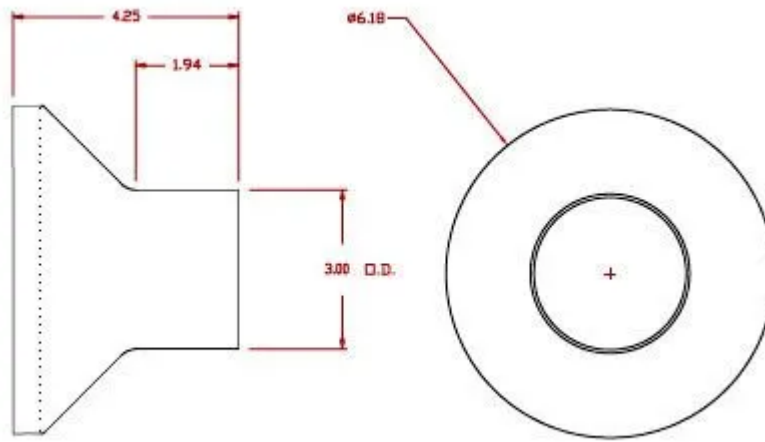
Inlet Fitting
11" Flanged Fitting



Inlet Fitting
6" Diameter Tube



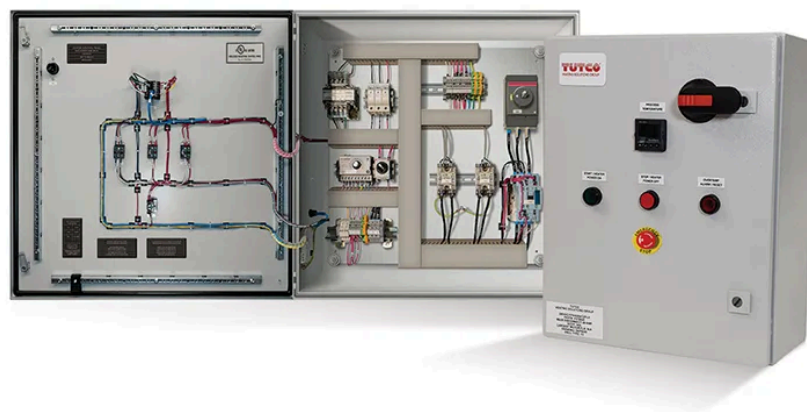
Inlet Fitting
4" Diameter Tube



Inlet Fitting
3" Diameter Tube

Complete your Thermal System

Check out these upgrade options for the Flow Torch™



Control Panels

Closed-loop heater control systems use a power controller, temperature controller, and thermocouples to monitor and provide constant output temperature.

[VIEW PRODUCT](#)



Insulation Blankets

Our insulation blankets are made specifically for the Flow Torch family of products. Improve safety for people and products, and save money by reducing waste heat.

[GET INFO](#)