

**POWER: 6,000 to 75,000 W**

**MAX INLET TEMP: 392°F \***

**MAX EXHAUST TEMP: 932°F**

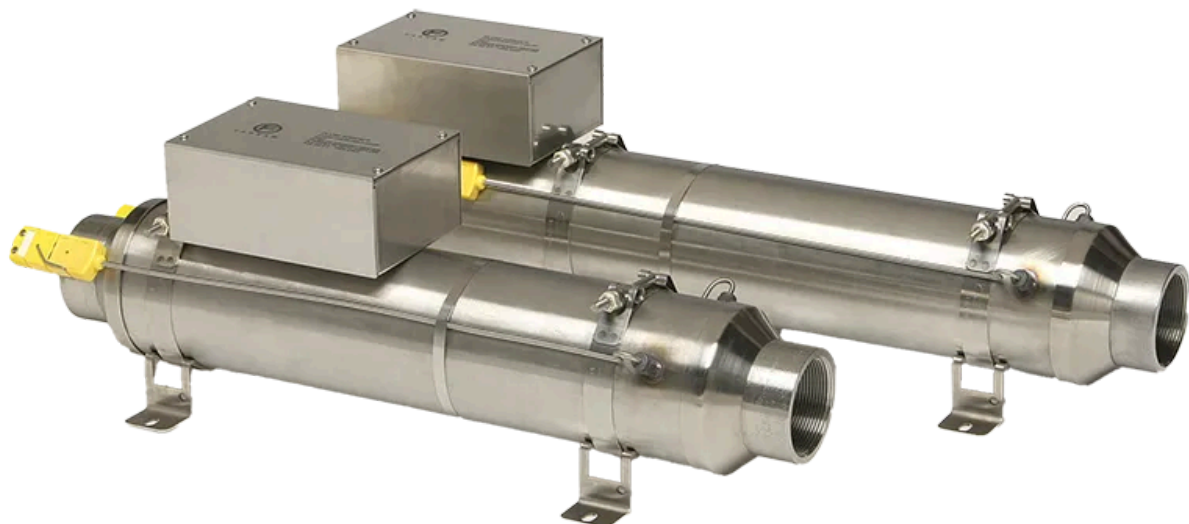
**PRESSURE: 120 PSIG**

## Flow Torch™



When industrial processes require precise, efficient, and reliable air heating, Flow Torch™ process heaters from TUTCO Farnam deliver rapid and consistent heat with a flow rate exceeding 200 SCFM. Whether you're working with drying, curing, emissions control, or another industrial manufacturing process, these high flow air heaters offer the power and efficiency your system needs to perform at its best.

At TUTCO Farnam, we provide customized in line air heaters and control solutions designed to integrate seamlessly into your industrial systems. TUTCO Farnam's Flow Torch™ family of process air heaters are designed for high-efficiency heating of large airflows, making them ideal for a wide range of industrial applications. These heaters, which can be customized with numerous options to meet specific application and performance requirements can reach temperatures up to 900°F. Some of the advantages these process heaters offer are:



- Minimal obstruction to airflow (low pressure drop)
- Ideal for low pressure (and economical) blowers
- Support high volume air flow
- Heat air up to 482°C (900°F)
- Fast heat up and cool down due to low mass open coil design
- Can be connected to suitable flexible duct or pipe fittings
- All Flow Torch Heaters are UL recognized components under UL file number E365755
- 250°F standard inlet temperature \*(392°F possible with modification)

TUTCO Farnam offers a range of graduated sizes for this versatile platform, making it a standard product with multiple customizable options. Our team provides application assistance to help you select the industrial air heater that best suits your needs. Additionally, control packages, pressure drop charts for easy comparison, and regenerative blowers integrated with complete systems are all available. With a long-standing history of dominance in the industrial heating solutions space, you can be confident that your custom Flow Torch™ will deliver optimal performance and longevity.

Flanged Fittings!

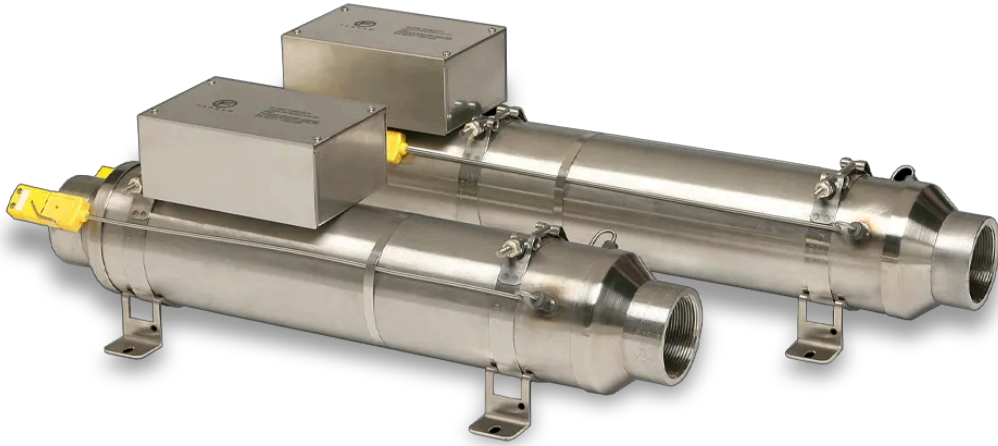
We have flanges available as a standard option on our Flow Torch heaters. Click here to build your FT400, FT600 & FT800 with flanged inlet and exhaust fittings.



Flow Torch™ 200

<b>MAX WATT:</b> 6000W	<b>MAX INLET:</b> 392°F
<b>MAX EXHAUST:</b> 932°F	<b>MIN SCFM:</b> 10
<b>MAX SCFM:</b> 115	<b>PSIG:</b> 120*

[VIEW PRODUCT](#)



Flow Torch™ 400

<b>MAX WATT:</b> 35000W	<b>MAX INLET:</b> 392°F
<b>MAX EXHAUST:</b> 932°F	<b>MIN SCFM:</b> 19
<b>MAX SCFM:</b> 500	<b>PSIG:</b> 3*

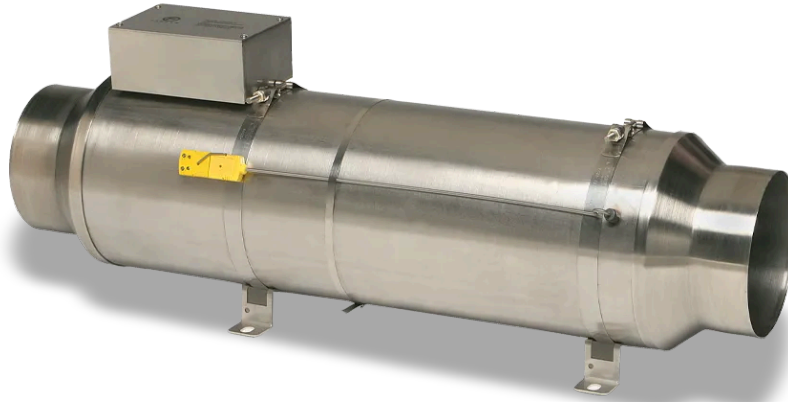
[VIEW PRODUCT](#)



Flow Torch™ 600

<b>MAX WATT:</b> 60000W	<b>MAX INLET:</b> 392°F
<b>MAX EXHAUST:</b> 932°F	<b>MIN SCFM:</b> 38
<b>MAX SCFM:</b> 1100	<b>PSIG:</b> 3*

[VIEW PRODUCT](#)



Flow Torch™ 800

<b>MAX WATT:</b> 75000W	<b>MAX INLET:</b> 392°F
<b>MAX EXHAUST:</b> 932°F	<b>MIN SCFM:</b> 76
<b>MAX SCFM:</b> 2000	<b>PSIG:</b> 3*

[VIEW PRODUCT](#)

\* with minimal leakage.

## Complete your Thermal System

Check out these upgrade options for the Flow Torch™



### Control Panels

Closed-loop heater control systems use a power controller, temperature controller, and thermocouples to monitor and provide constant output temperature.

[VIEW PRODUCT](#)



### **Insulation Blankets**

Our insulation blankets are made specifically for the Flow Torch family of products. Improve safety for people and products, and save money by reducing waste heat.

[GET INFO](#)