

4

3

2

1

THIS DOCUMENT CONTAINS PROPRIETARY INFORMATION OF FARNAM CUSTOM PRODUCTS (AND ITS RECEIPT OR POSSESSION DOES NOT CONVEY ANY RIGHTS TO REPRODUCE, DISCLOSE ITS CONTENTS, OR TO MANUFACTURE, USE, OR SELL ANYTHING IT MAY DESCRIBE), REPRODUCTION, DISCLOSURE, OR USE WITHOUT SPECIFIC WRITTEN AUTHORIZATION OF FARNAM CUSTOM PRODUCTS IS STRICTLY FORBIDDEN.

REV	DATE	DESCRIPTION	REV'D BY	APP'D BY
A	6/9/2023	RELEASE		CLH

PRELIMINARY

MARKING DETAILS

PRESSURE TORCH

PT600 - **kW - VVV - P - *F - *F - TF*

**kW VVV *-PH 50/60Hz WWYY

ALWAYS GROUND HEATER

& OPERATE WITH AIRFLOW

AIR INLET - THIS END

DISCONNECT ALL POWER BEFORE REMOVING COVER

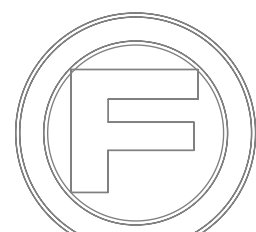
OPÉRER SEULEMENT AVEC CONNEXION ÉLECTRIQUE

A LA TERRE ET AVEC DEBIT D'AIR

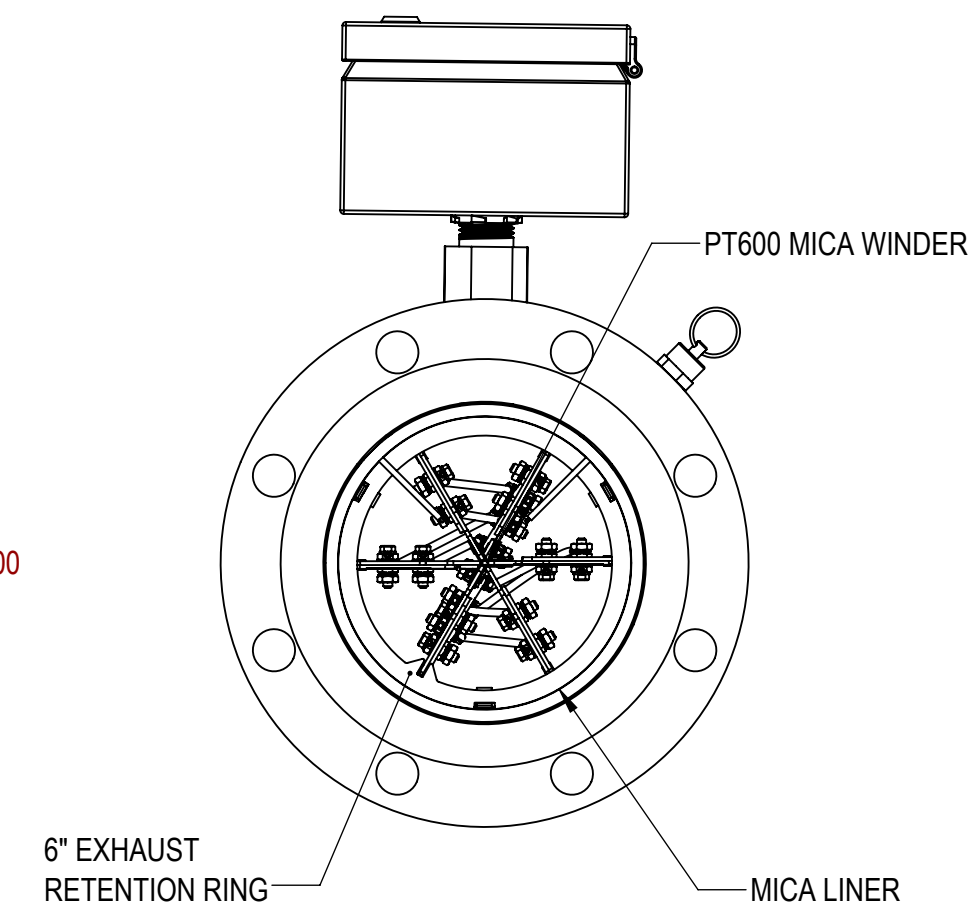
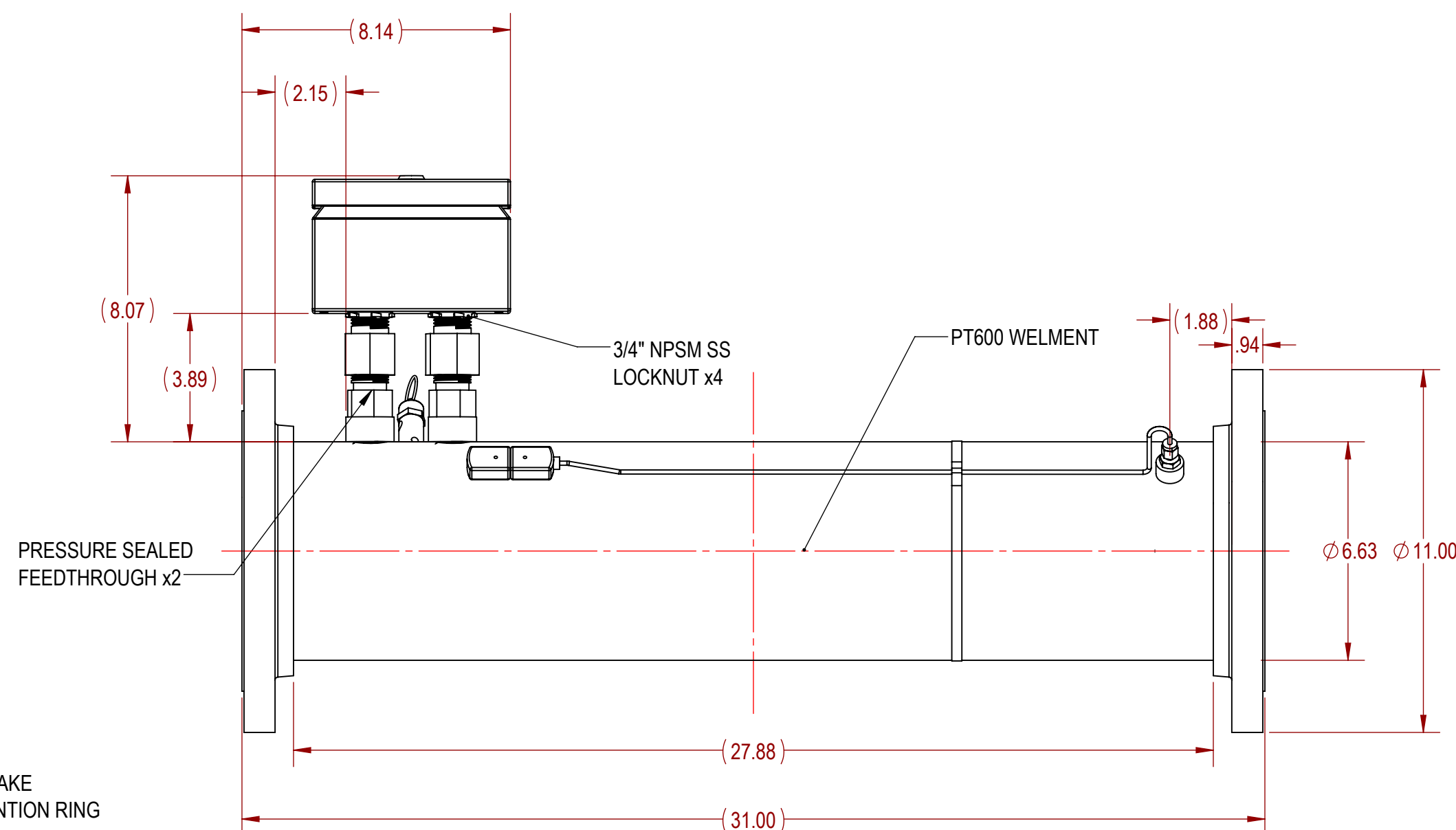
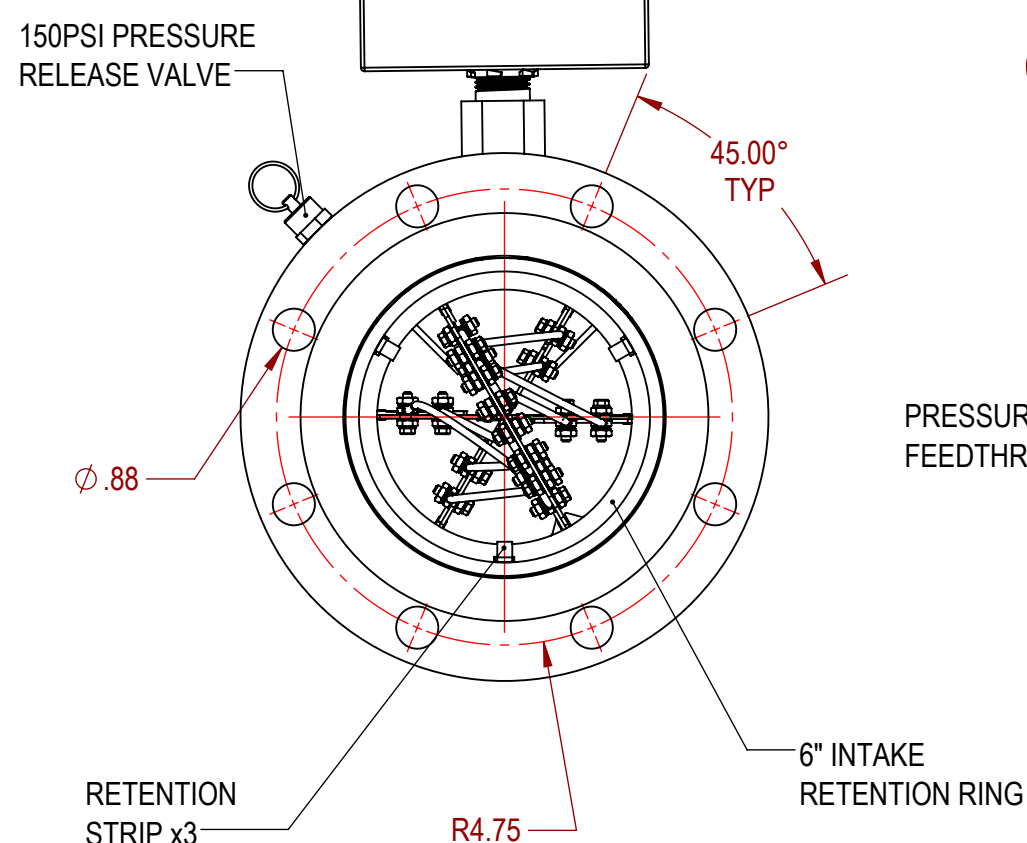
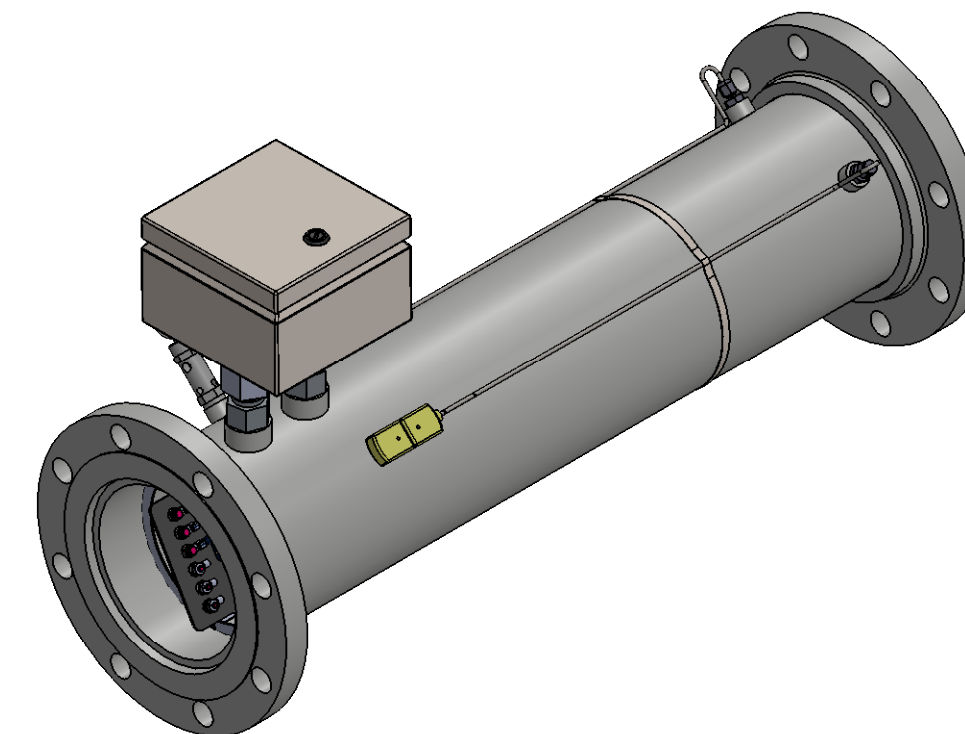
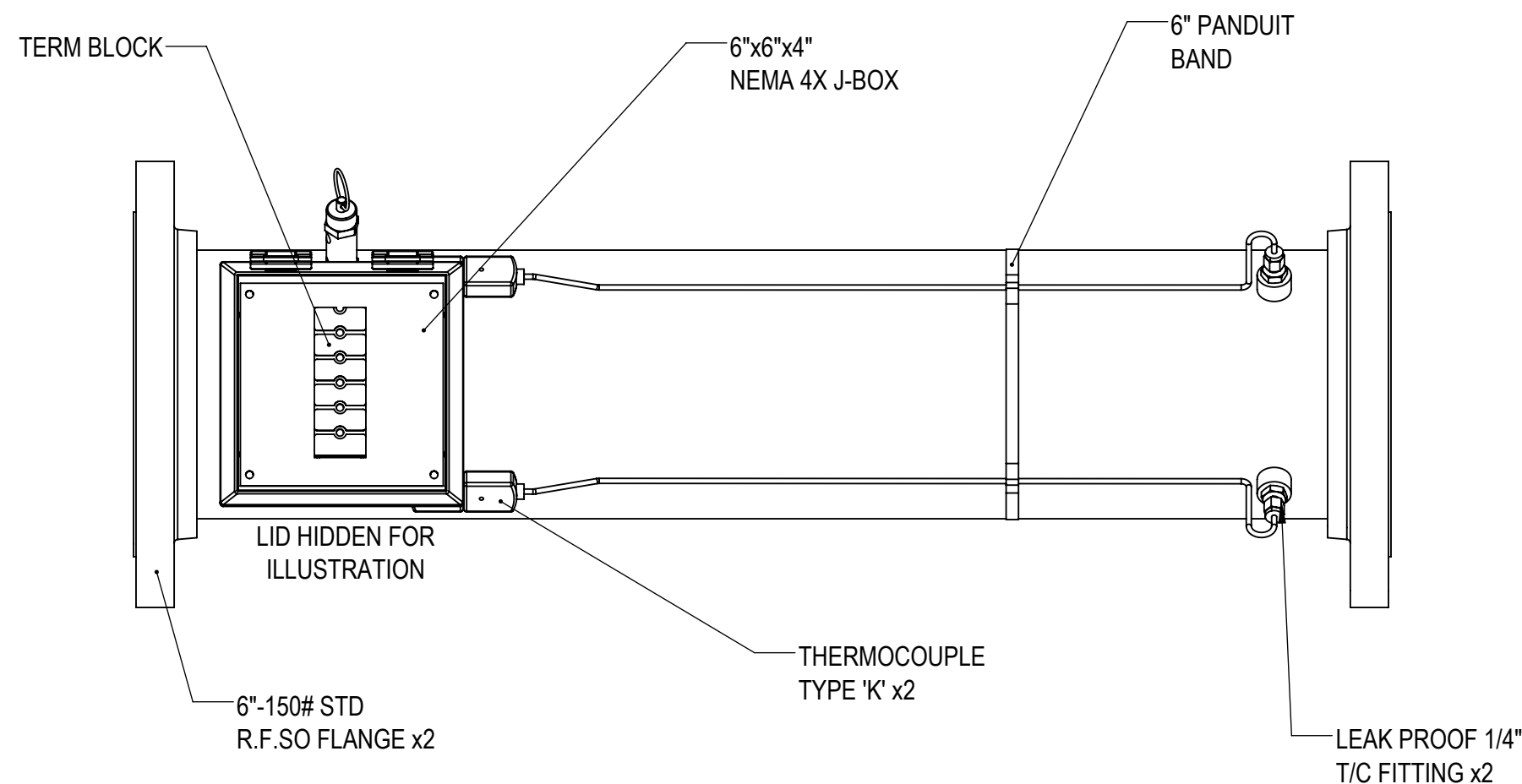
ENTRÉE D'AIR - CE BOUT

COUPEZ L'ALIMENTATIONS

AVANT DE RETIRER LE COUVERCLE



FARNAM



- 1. MAX PRESSURE RATING AT 150PSI.
- 2. FOR WATTAGE AND VOLTAGES REFER TO FT600.
- 3. PLACE MARKING ON J-BOX LID WITH BOTTOM FACING LOCK.

CUSTOMER NAME: FARNAM CUSTOM PRODUCTS		TUTCO HEATING SOLUTIONS GROUP		FARNAM CUSTOM PRODUCTS	
CUSTOMER P/N: FARNAM CUSTOM PRODUCTS		30 LEGEND DRIVE, ARDEN, NC 28704 PH: (828)-684-3766 FX: (828)-684-3768			
U.O.S. DIMENSION TOLERANCES ARE BELOW IN INCHES		TITLE: PT600			
LEAD LENGTH 0 < LL ≤ 20 ±0.25 20 < LL ≤ 50 ±0.50 50 < LL ≤ 75 ±1.00 75 < LL ≤ 100 ±2.00 100 < LL ≤ 150 ±3.00		GENERAL GEOMETRY ANGULAR: ± 1/2 ° XX ± .01 XXX ± .005		DWG. NO. HI-P FT600 ASSY	
DO NOT SCALE DRAWING THIRD ANGLE PROJECTION		CHECKED BY: CLH DATE: 6/9/2023		REV A	
DRAWN BY: JEO DATE: 6/9/2023		SCALE: 1:8		SHEET: 1 OF 1 SIZE: C	

4

3

2

1