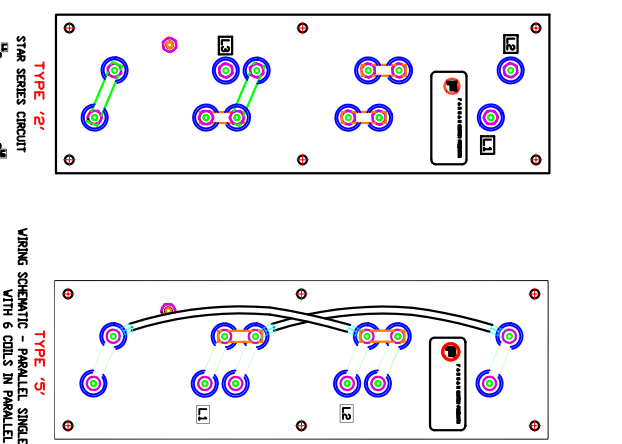
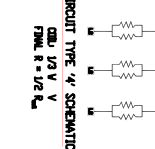
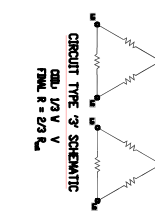


MULTIPLE STAGE CIRCUITS



2. PART # SPECS: DH13-W/V-W-VVV-P-S
 SERIES DESIGNATION: DH13-W/V-W-VVV-P-S
 SIZE DESIGNATION: KV
 VOLTS: V
 STAGE (IF APPLICABLE): (PHASES SINGLE STAGE)
 PHASE: P



FILE: DH13 STD A

CONFIDENTIAL		THIRD ANGLE PROJECTION	
THIS DOCUMENT CONTAINS PROPRIETARY INFORMATION OF FARWAM CUSTOM PRODUCTS (AND ITS RECEIPT OR POSSESSION DOES NOT CONVEY ANY RIGHTS TO REPRODUCE, DISCLOSE ITS CONTENTS, OR TO MANUFACTURE, USE, OR SELL ANYTHING IT MAY DESCRIBE). REPRODUCTION, DISCLOSURE, OR USE WITHOUT SPECIFIC WRITTEN AUTHORIZATION OF FARWAM CUSTOM PRODUCTS IS STRICTLY FORBIDDEN.		ALL DIMENSIONS ARE IN INCHES UNLESS OTHERWISE SPECIFIED. N.T.S. DO NOT SCALE DWG.	
TOLERANCES: .005 - .010 .010 - .020 .020 - .030 .030 - .040 .040 - .050 .050 - .060 .060 - .070 .070 - .080 .080 - .090 .090 - .100		TITLE: STANDARD DH13 HEATER REV: A	
APPROVED BY: JED	DATE: 07/16/07	DATE: 07/16/07	DATE: 07/16/07
DESIGNED BY: MFT	DATE: 07/16/07	DATE: 07/16/07	DATE: 07/16/07
REV: A	REV: A	REV: A	REV: A
SIZE: C	SIZE: C	SIZE: C	SIZE: C